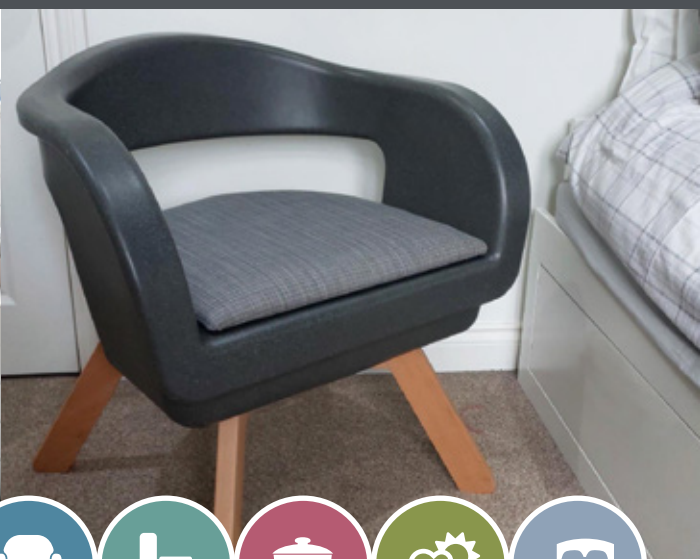


# DAILY LIVING

Products to help people  
live with independence,  
dignity and safety.



# GORDON ELLIS ABOUT US



## GORDON ELLIS HEALTHCARE

We believe that everyone should live with independence, dignity and safety.

As a family business established over 160 years ago, we understand that our customers know their needs best. Our award winning products have only been made possible by working closely with professionals and by listening to our customers' feedback. Driven by a real understanding of our users' needs, we make it easier to take care of yourself, or the people you care for.

Gordon Ellis and Co. produce high quality yet affordable products, designed with care and attention. We are inspired by the positive changes we help people make every day, and we hope this product brochure has some new ideas for you too.

Our team looks forward to answering any questions you may have.

**Fiona Ellis-Winkfield**, Managing Director



# CONTENTS



## FURNITURE RAISERS

4

Our range of Furniture Raisers is trusted by Occupational Therapists and Physiotherapists. They are designed to raise the height of furniture, making it easier to enjoy your life at home.



## BATHROOM

18

A few extra fixtures in the bathroom can make a big difference. Our designers have developed a full range of grab rails, raised toilet seats, bath steps and bath seats to help people stay independent by giving extra comfort and safety.



## SPECIALIST BATHROOM

44

From coloured grab bars and steps, to bariatric toileting, we have everything covered for when specialist equipment is needed in the home without compromising quality.



## KITCHEN

49

Useful gadgets to make kitchen jobs easier, such as the Kettle Tipper and Spill Not jar opener, which can even be used one-handed.



## OUTDOOR

53

Our outdoor range provides assistance to those with weak grip and reduced mobility. Our range draws on feedback from users and Occupational Therapists and includes outdoor half steps, ramps, and grab bars.



## HOME

59

Made from the highest quality wood and fabric in colours to match the style of any room, our new range includes discreet commode chairs and transfer boards in bamboo.



## GOOD FOR KIDS

72

Simple adjustments can make a big difference to children at home and at school. SureGrip raisers give wheelchair access to desks and tables, steps can help improve classroom concentration by providing sensory feedback, and improved positioning for fine motor skills.



## TECHNICAL INFORMATION

74

FURNITURE  
RAISERS



BATHROOM



SPECIALIST  
BATHROOM



KITCHEN



OUTDOOR



HOME









# FURNITURE RAISERS

## FURNITURE RAISERS MAKE SITTING DOWN AND STANDING UP EASIER.

Our industry leading range of furniture raisers is trusted by Occupational Therapists and Physiotherapists to safely lift furniture.

Furniture Raisers easily attach to existing furniture so you can avoid the significant expense of buying new higher chairs or beds.

We offer a specialist training session for healthcare professionals. Please contact us for details.



FURNITURE  
RAISERS



BATHROOM



SPECIALIST  
BATHROOM



KITCHEN



OUTDOOR

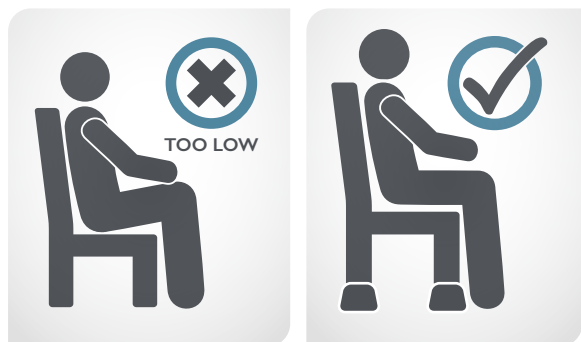


HOME



# WHY RAISE FURNITURE?

If your hips are lower than your knees when you are sitting down, your chair may be too low. Furniture Raisers make a chair or bed higher, which makes it easier to get up from.



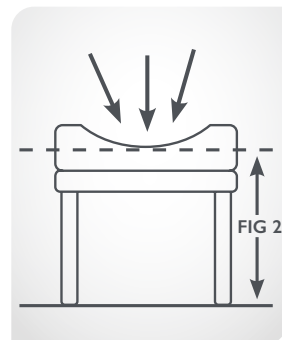
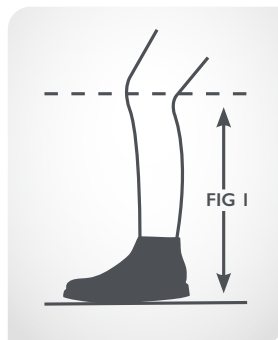
It is important to raise every point of contact with the floor by the same height. All castors or legs are load bearing and need to be supported.

Be careful not to raise furniture too high, as it can be uncomfortable for the user. The perfect raise height should make the hip level with the knee.

The key benefit of our furniture raisers is that they are versatile - you can raise chairs, beds, sofas and even tables. We recommend looking to raise a single armchair first, when possible, as it allows the user to push on both arm rests when standing or sitting down. A two or three seater sofa can be raised, but please take care as a sofa is communal furniture and the traffic on and off it will be greater.

## HOW MUCH SHOULD I RAISE IT?

1. Measure the distance from the floor to the back of the knee, when the person is wearing any shoes they would normally wear around the house (Fig. 1).
2. For chairs: measure the height from the floor to the top of the seat when it is depressed, as if someone were sitting in the chair.  
  
For beds: measure the height from the floor to the top of the mattress when depressed, as though someone were sitting on the edge of the bed (Fig. 2).
3. Subtract your Fig. 2 measurement from your Fig. 1 measurement to give you the measurement of the raise required.



# FREQUENTLY ASKED QUESTIONS

## CAN YOU MOVE FURNITURE ONCE IT IS RAISED?

No, with the exception of the Leg-X (page 17)

## DOES A CHAIR HAVE TO BE POSITIONED AGAINST A WALL ONCE IT IS RAISED?

We suggest furniture is positioned against a wall, ideally in a corner; but it is not always necessary, depending on the user's interaction with the furniture. Your risk assessment should take this interaction into account when deciding where to position it and also the environment of where it is being raised.

## CAN YOU RAISE RECLINING CHAIRS?

No, some reclining chairs have a mechanism that, when on the floor, lifts the front castors up to prevent movement of the chair when reclined. This can lift the chair free of the raiser and make the chair very unstable.

## CAN YOU RAISE A PROFILING BED?

Yes, as long as it has a divan style base, it can be possible to use the Multi-Purpose Raiser subject to a risk assessment (particularly for weight and motion from the motors).

## CAN A LEG BE SUPPORTED IN THE WELL ON THE MULTI-PURPOSE RAISER?

Yes.

## CAN THE WELL ON THE MULTI-PURPOSE RAISER SUPPORT A LOAD?

Yes, our multi-purpose raiser is designed to be load bearing both in the well and around the top, as long as the furniture makes contact around the whole top rim of the raiser. The total weight limit is 78 stone (500kg) across the set of raisers, including the weight of the furniture.

## CAN YOU RAISE A SOFA?

Yes, a two seater sofa can be raised using the Multi-Purpose Raiser or SureGrips. Use the extra-long spreader bar to accommodate a small two seater sofa up to 1.5m (60" long), provided it has only four castors, with the benefit that all the supports are linked. With three seater sofas, we recommend that three pairs of linked SureGrips or Multi-Purpose Raisers are used, with a support at each end running front to back underneath the arms. An additional support is placed in the middle, even if there are no castors to support. A sofa should ideally be placed against a wall or across the corner of a room. It is always preferable to raise a single armchair; if possible, to allow the user two arms for support when standing.

## CAN WE RAISE THE BACK OF A CHAIR MORE THAN THE FRONT?

No, furniture is designed to stand on a flat and reasonably level floor. If you start to raise it at different heights either at the front or back, the furniture is no longer standing on a level plane. You are putting forces through joints in ways they were not designed for. It is also uncomfortable for the user; as they may now be sitting on a forward incline, which places shear forces on the buttocks and thighs.

## WHAT DO WE DO WITH LAMINATE FLOORING?

Where the furniture is moving on a laminate floor, we suggest that a non-slip mat should be placed between the raiser and the floor. We recommend a mesh type, which has spaces for liquids to collect if spilled, rather than a solid sheet which can aquaplane.

## IS THERE ANY FURNITURE YOU DO NOT RECOMMEND RAISING?

Yes, we do not recommend raising ottoman beds, chaise longues, beds with televisions or four poster beds. We do not recommend our raisers for reclining chairs, but profiling beds can be raised, if they have a divan style base.



# LANGHAM SUREGRIP

## KEY FEATURES

- Most versatile raiser on legs, castors & block feet
- Twists to quickly adjust height
- Use independently or linked

Designed to make raising as simple as possible, it can be used with it can be used with most types of furniture, from beds and sofas, to tables and desks.. It can accommodate castors, legs, solid divan bases and even modern block feet, by using the included adhesive pad adaptors.

Each Langham SureGrip features a unique double grip to hold tightly on to furniture without damaging it. The height is adjusted in seconds simply by twisting the unit up and down. The exact raise height is shown on the side as you raise it.

**IDEAL FOR:** Sofas, beds, chairs (except dining chairs), tables, desks.



**USE WITH LEGS**  
up to 2¾ inch (7 cm) diameter  
Raises 1¾ - 4¼ inch  
(4.5 - 10.5 cm)



**USE WITH CASTORS**  
Raises 3 - 5½ inch  
(7.5 - 14 cm)



**USE ADAPTOR WITH  
BLOCK FEET OR SOLID  
BASES**  
Raises 4 - 6 ½ inch  
(10 - 16.5 cm)



**700KG / 110 STONE / 1540 LBS**





# LANGHAM SUREGRIP

## OPTIONAL LINK ARMS

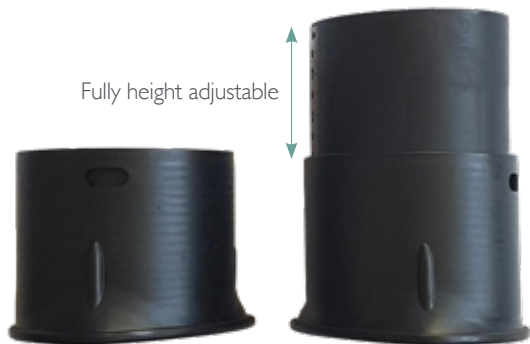
For greater reassurance the Langham SureGrip can be easily linked together using additional link arms and a spreader bar.

The raisers can be used on chairs, sofas, beds and tables of varying sizes. The link required depends on the footprint of the furniture.

For chairs and small sofas, a cross-style link or two side by side is suggested.



Fully height adjustable



For large sofas and beds or furniture with six legs/casters, a line-style link is possible between the legs.



## SINGLE PACKS

**60570** Raisers (pk 4) in a retail box with adaptors

**60570/NS** Raisers (pk 4) in a plain box with adaptors

## BULK PACKS

**60570/B** Raisers (5 pks of 4) in a bulk box, without adaptors

## OPTIONAL EXTRAS / SPARE PARTS

**60571** Link arms (pack of 2)

**60572** Spreader bar (single, with bolt)

**60573/B** Block foot adaptors (bulk box of 20)

**60574** Spare foot pads (pack of 12)



FURNITURE  
RAISERS



BATHROOM



SPECIALIST  
BATHROOM



KITCHEN



OUTDOOR








HOME



# LANGHAM SUREGRIP REFERENCE GUIDE

TO ASSIST YOU WHEN CHOOSING YOUR PARTS:

The Langham SureGrip features a double grip to hold tightly onto furniture and can be linked together to create a stable linked raise, for furniture prone to movement when used.

	SUREGRIP	SPREADER BAR	LINK ARMS (PACK OF 2)
<b>ARMCHAIRS WITH 4 LEGS / CASTORS</b> 	4 RAISERS	1	2 PACKS
<b>SMALL SOFAS WITH 4 LEGS / CASTORS</b> 	4 RAISERS	1	2 PACKS
<b>LARGE SOFAS WITH 6 LEGS / CASTORS</b> 	6 RAISERS	0	3 PACKS
<b>SINGLE BED WITH 4 LEGS / CASTORS</b> 	4 RAISERS	0	2 PACKS
<b>DOUBLE BED WITH 6 LEGS / CASTORS</b> 	6 RAISERS	3	3 PACKS



## DESIGNED TO MAKE FURNITURE RAISING AS SIMPLE AS POSSIBLE.

The tough high-quality plastic will give a long service life and is easy to clean by hand or mechanical processes.

The unit is load bearing on top and in the well, so it is versatile enough to raise furniture with castors, solid bases, large wooden blocks that will rest on top, or large wooden legs that will fit inside. It can even raise the double castors found on divan beds.



**USE WITH LEGS**  
up to 2 3/4 inch (7 cm)  
diameter  
Raises 1 3/4 - 4 1/4 inch  
(4.5 - 10.5 cm)



**USE WITH CASTORS**  
Raises 3 - 5 1/2 inch  
(7.5 - 14 cm)



**USE ADAPTOR WITH BLOCK FEET OR SOLID BASES**  
Raises 4 - 6 1/2 inch  
(10 - 16.5 cm)



FURNITURE  
RAISERS

BATHROOM

SPECIALIST  
BATHROOM

KITCHEN

OUTDOOR

HOME

# MULTI-PURPOSE RAISER

THE INDUSTRY STANDARD:  
STABLE, VERSATILE & DURABLE.



## KEY FEATURES

- Built from components for versatility
- Suits castors, chunky legs and solid bases
- Made from black plastic for ease
- Recycles well. Long lasting

The Langham Multi-Purpose Raiser has been carefully developed using over 30 years of experience in designing and manufacturing furniture raisers, coupled with feedback from Occupational Therapists.

Linked raisers provide the safest method of raising furniture as they are very stable, even for those who sit down forcefully.

The Multi-Purpose Raiser components can be used to build a stable raiser for the majority of armchairs, beds and sofas, yet can be removed without damaging or changing the furniture.

The black plastic gives an attractive unobtrusive finish, which blends into your household furniture.

**IDEAL FOR:** Armchairs, sofas and beds.

**Do not move the furniture once raisers are fitted.**



### MULTI PURPOSE RAISER (MPR)

One pair of linked supports with a bolt. **LP/MPR-BK**



### CLIP ON HEIGHT SECTIONS

Use a maximum of four:  
Each section raises  $\frac{3}{4}$  inch (2cm)  
**LP/MPR/BASE-BK**  
(Pack of 12)



### SPREADER BAR AND BOLT

Spreader bar and bolt used to link two MPR units.

**LP/MPR/SB (Pack of 6)**  
**60572 (Single)**



### EXTRA LONG SPREADER BAR

To stretch out MPR unit across a king size bed.  
**LP/MPR/4 (Pack of 6)**



A spare wingnut and bolt is available:  
**LP/BOLTSET**

The tough high-quality plastic will give a long service life and is easy to clean by hand or mechanical processes. The unique pivoting head allows the same main unit to be used at the head, middle or foot of the bed, or perfectly placed to fit into the corners of an armchair.

The unit is load bearing on top and in the well, so it is versatile enough to raise furniture with castors, solid bases, large wooden blocks that will rest on top, or large wooden legs that will fit inside. It can even raise the double castors found on divan beds.

### RAISE HEIGHTS:

#### LEGS



2 - 5 inch  
5 - 13 cm

#### CASTORS



3 - 6 inch  
7½ - 15½ cm

#### DIVAN BASE



4 - 7 inch  
10½ - 18½ cm



**500KG / 78 STONE / 1100LBS**



# MULTI-PURPOSE RAISER REFERENCE GUIDE

TO ASSIST YOU WHEN CHOOSING YOUR PARTS:

## ARMCHAIRS WITH 4 CASTORS



### 2 MPR MAIN UNITS

### RAISE REQUIRED

3 inch (7.5 cm)  
3 ¾ inch (9.5 cm)

### CLIP-ON HEIGHT SECTIONS

0  
4

### 1 SPREADER BAR

4 ½ inch (11.5 cm)  
5 ¼ inch (13.5 cm)  
6 inch (15.5 cm)

8  
12  
16

## SMALL SOFAS WITH 4 CASTORS



### 2 MPR MAIN UNITS

### RAISE REQUIRED

3 inch (7.5 cm)  
3 ¾ inch (9.5 cm)

### CLIP-ON HEIGHT SECTIONS

0  
4

### 1 SPREADER BAR

4 ½ inch (11.5 cm)  
5 ¼ inch (13.5 cm)  
6 inch (15.5 cm)

8  
12  
16

## LARGE SOFAS WITH 6 CASTORS



### 3 MPR MAIN UNITS

### RAISE REQUIRED

3 inch (7.5 cm)  
3 ¾ inch (9.5 cm)

### CLIP-ON HEIGHT SECTIONS

0  
6

### 0 SPREADER BARS

4 ½ inch (11.5 cm)  
5 ¼ inch (13.5 cm)  
6 inch (15.5 cm)

12  
18  
24

## SINGLE BED WITH 4 CASTORS



### 2 MPR MAIN UNITS

### RAISE REQUIRED

3 inch (7.5 cm)  
3 ¾ inch (9.5 cm)

### CLIP-ON HEIGHT SECTIONS

0  
4

### 0 SPREADER BARS

4 ½ inch (11.5 cm)  
5 ¼ inch (13.5 cm)  
6 inch (15.5 cm)

8  
12  
16

## DOUBLE BED WITH 6 CASTORS



### 3 MPR MAIN UNITS

### RAISE REQUIRED

3 inch (7.5 cm)  
3 ¾ inch (9.5 cm)

### CLIP-ON HEIGHT SECTIONS

0  
6

### 3 SPREADER BARS

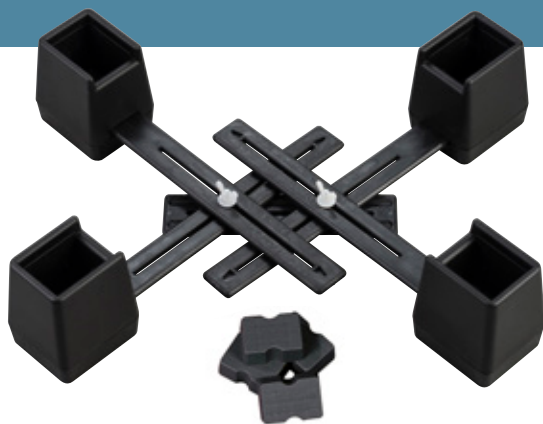
4 ½ inch (11.5 cm)  
5 ¼ inch (13.5 cm)  
6 inch (15.5 cm)

12  
18  
24



# ADJUSTABLE CHAIR RAISER

THE ORIGINAL LANGHAM RAISER,  
FOR FIRESIDE CHAIRS.



## KEY FEATURES

- Quick and easy to fit or remove
- Blocks included to adjust height
- Linked raise for best possible stability
- Recycles well. Long lasting

The original Langham Adjustable Chair Raiser has been tried, tested and trusted by Occupational Therapists for decades. The black plastic gives an attractive unobtrusive finish, which blends into your household furniture.

The linked design gives the highest level of stability, supplied fully assembled in an easy to fit pack. The load-bearing point is at the bottom of the well, so they are ideal for thinner legs. It is not load bearing on the top.

Height adjusting insert blocks are included to change the raise height from 2 - 4 inches (5 - 10 cm) depending on the user's needs.

**IDEAL FOR:** Armchairs.

**Do not move the furniture once raisers are fitted.**

LP/JLP125PI

Adjustable Chair Raiser



**500KG** / 78 STONE / 1100 LBS



# ADJUSTABLE BED RAISER

DESIGNED FOR RAISING BEDS  
WITH THIN LEGS.



## KEY FEATURES

- Quickly raises beds
- Strong and steady in use
- Versions available for single and double beds
- Recycles well. Long lasting

The Langham Adjustable Linked Bed Raiser can be used to raise beds with legs up to 2 ½ x 3 inch in size (6.5 x 7.5 cm). The black plastic gives an attractive unobtrusive finish, which blends into your household furniture.

It has been carefully designed for beds supported on legs. Each unit is linked across the width of the bed to provide greater strength, in addition, each base is elongated to improve the size of the footprint, giving greater stability and reassurance for the user.

The raise can be altered using the insert blocks under the bed legs to provide three different height adjustments - 2 ½, 3 ½ and 4 ½ inch (6.5, 8.8, 11.5 cm). Legs should only make contact at the bottom of the well. It is not load bearing on top.

**IDEAL FOR:** Beds with thin legs.

**Do not move the furniture once raisers are fitted.**

LP/NLP129

Double Beds

LP/NLP129S

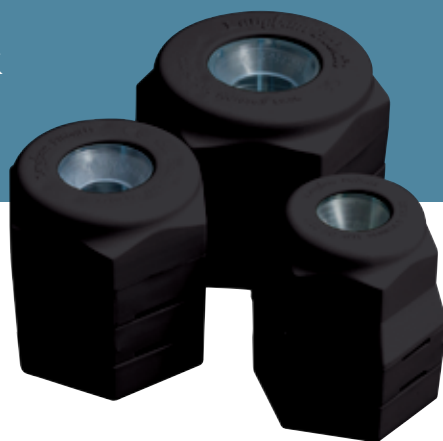
Single Beds



**500KG** / 78 STONE / 1100 LBS

# GRIP-ON RAISERS

THE GRIP-ON RAISERS ARE HIGHLY VERSATILE AND WORK WITH FURNITURE ON CASTORS OR ON LEGS.



## KEY FEATURES

- Grips firmly onto castors or legs
- Increased reassurance and safety
- Lowest possible raise of 1 inch (2.5 cm)

The Grip-On Raisers use a unique 'doughnut' to grip on to the furniture meaning no tools are needed. There are three sizes to choose from.

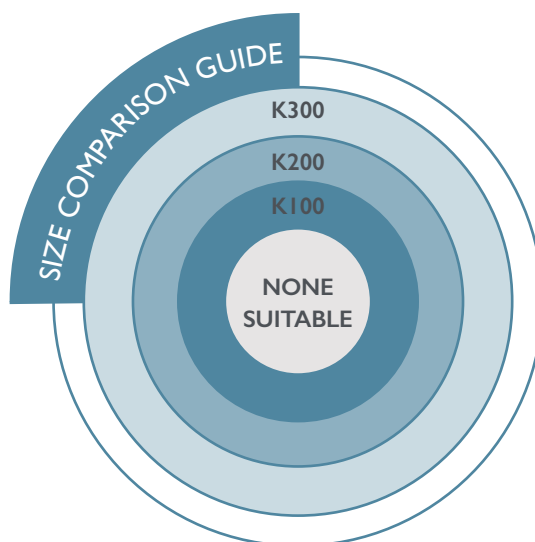
The raiser becomes attached to the furniture without damaging it, giving increased safety over cone raisers and providing additional reassurance for the user.

The Grip-On raisers are provided as a set of four with a 3 inch (7.5 cm) raise made up of individual 1 inch (2.5 cm) sections. A raise height can be set as low as just 1 inch (2.5 cm) or, by using two packs, can be set as high as 5 inch (12.5 cm).

If in doubt, please contact our helpful team for advice.

**IDEAL FOR:** Chairs (except dining chairs), beds and sofas.

**Do not move the furniture once raisers are fitted.**



## TO SELECT THE CORRECT SIZE

Please place the foot or castor over the guide above, or download a free Grip-On gauge from our website.

**Minimum diameter:**  $\frac{3}{4}$  inch (19 mm)

<b>LP/K100:</b>	Maximum diameter $1\frac{1}{4}$ inch (30 mm)
<b>LP/K200:</b>	Maximum diameter $1\frac{3}{4}$ inch (43 mm)
<b>LP/K300:</b>	Maximum diameter $2\frac{1}{4}$ inch (56 mm)



**500KG** / 78 STONE / 1100 LBS



FURNITURE  
RAISERS



BATHROOM



SPECIALIST  
BATHROOM



KITCHEN



OUTDOOR



HOME



# ELEPHANT FEET

QUICKLY RAISE THE HEIGHT OF  
A CHAIR OR BED.



## KEY FEATURES

- Tried and tested design
- Easy to fit and remove
- Wide central recess for castors

Elephant Feet can be fitted underneath a chair or bed in a matter of minutes, and removed easily when no longer required. Each foot is placed under the castors or legs of the chair or bed, raising the height by either 3½ inches (9 cm) or 5½ inches (14 cm) (depending on model).

The simple and strong design doesn't draw attention and blends well with furniture. The wide top is 3½ inches (9 cm) in size and holds a slip resistant insert with a central recess.

**IDEAL FOR:** Armchairs, sofas and beds.

**Do not move the furniture once raisers are fitted.**

6070	Grey	3½ inch (9 cm)
6074	Grey	5½ inch (14 cm)
6070/BK	Black	3½ inch (9 cm)
6074/BK	Black	5½ inch (14 cm)



**500 KG** / 78 STONE / 1100 LBS



# BAMBERRY CUBES

MAKES FURNITURE MORE  
COMFORTABLE TO USE.



## KEY FEATURES

- Simple to install
- Bamboo is attractive and eco-friendly
- Clear lacquer for a hard wearing finish

Made from attractive bamboo, these cubes offer a stylish way to raise the height of your furniture. They feature a clear lacquer which ensures a hard wearing finish and water resistance.

**Available in 2 heights;** 3½ inch (9 cm) and 5½ inch (14 cm), they are quick and simple to install.

The 3½ inch (9 cm) raisers have 3 recesses to choose from for different leg widths from 1¼ inch (3.2 cm) to 3 inch (7.6 cm).

The 5½ inch (14 cm) offers a wider solid base.

Supplied as a pack of four:

This product supersedes the Silva Cube furniture raiser range (product codes 5513, 5514, 5515 & 5516).

**IDEAL FOR:** Armchairs and beds with thin legs.

**Do not move the furniture once raisers are fitted.**

55913	3½ inch (9 cm)	55914	5½ inch (14 cm)
-------	----------------	-------	-----------------



**380KG** / 60 STONE / 840 LBS



# SILVA RAISERS

TRADITIONAL HARDWOOD WHICH ADAPTS EXISTING CASTORS.



Bayonet

Screw

## KEY FEATURES

- Raises beds with castors
- Strong and secure
- Available with screw or bayonet fittings

These hardwood Silva Raisers increase the height of a bed. The existing castors of the bed are removed, the raiser is inserted into the screw fitting, and then the original castors are replaced. A simple solution to raise the height of your bed.

**IDEAL FOR:** Beds with castors.

5517	3 inch (7.5 cm)	Screw	Sold in packs of 10 sets of 4 raisers
5518	4 inch (10 cm)	Screw	
5528	3 inch (7.5 cm)	Bayonet	
5529	4 inch (10 cm)	Bayonet	



**380KG** / 60 STONE / 840 LBS



# LEG-X

PERFECT FOR ANY CHAIRS WHICH NEED TO BE MOVED.



## KEY FEATURES

- Ideal for dining chairs
- Chair can be moved when raised
- Fits straight, curved and splayed legs

Leg-X furniture raisers fit tightly to chair legs and are even suitable for legs that have a curve or are splayed. A smooth domed base at the bottom allows the chair to be easily moved across the floor, making the Leg-X ideal for dining chairs, or a chair under a desk.

Flexible plastic fins inside grip each leg with dimensions of 1 1/4 inch - 2 inch (3 - 5 cm). Drop-in blocks can be added to raise the chair to the desired height, from 3 - 5 inches (7.5 - 12.5 cm).

**IDEAL FOR:** Chairs with thin legs (such as dining chairs)

6016

Leg-X (Pack of 4)



**380KG** / 60 STONE / 840 LBS

FURNITURE  
RAISERS



BATHROOM



SPECIALIST  
BATHROOM



KITCHEN



OUTDOOR



HOME







# BATHROOM

**A FEW EXTRA FIXTURES IN THE BATHROOM CAN MAKE A BIG DIFFERENCE.**

We are proud of our award-winning bathroom range, tried and tested the world over. Our grab bars, raised toilet seats and bath steps give people independence, comfort and safety.



BATHROOM



SPECIALIST  
BATHROOM



KITCHEN



OUTDOOR



HOME

# CHOOSING A RAISED TOILET SEAT

A SIMPLE WAY FOR THOSE WITH LIMITED MOBILITY TO FEEL MORE STABLE AND SECURE.



Gordon Ellis & Co. are acknowledged experts in raised toilet seats. We have a seat to suit almost every need, producing the widest range of seats of any manufacturer.

Toilet raisers come in three standard sizes:

- 2 inch (5 cm)
- 4 inch (10 cm)
- 6 inch (15 cm)
- Can be immersed for cleaning or sterilised in an Autoclave or Turbex (bulk packs only)

## TO GET THE PERFECT POSITION:

To get the perfect position, your knees and hips should be at the same height when sat on the toilet seat. A seat that is too low can be uncomfortable and more difficult to stand up from.

1. Measure the distance between the floor and back of the thigh, just behind the knee. This is the recommended seat height.
2. Measure the current height of the seat, and subtract from the first measurement.
3. The difference between the two is the measurement of raise required.



## FITTING OUR RAISED TOILET SEATS:

Our Enterprise toilet seat has a unique fixing bracket which secures under the existing toilet seat, so you don't need to remove the existing seat and allows the Enterprise to be clipped on and off in seconds.

The Nobi and Big John replace the original seat. These are easily fixed just like a regular toilet seat, using the two existing holes in the back of the toilet bowl.

Our Ashby and Prima Lifts allow you to keep your toilet seat while adding either a 3 inch (7.5 cm) rise for the Ashby or a 2 inch (5 cm) rise for the Prima. The total height with your original toilet seat is up to 4 inches (10 cm) for the Ashby and up to 3 inches (7.6 cm) for the Prima. The unit is supplied with appropriate brackets for fixing.

All our other raised toilet seats use brackets to hold the seat in place on the toilet bowl, which are designed to be tightened by hand.

For security, all our raised toilet seats are fixed directly onto the toilet pan, not fixed on top of the original seat. Clear instructions are included with the seat, but please always check that it is securely attached before you sit down.

**This advice is intended as guidance and should not replace a thorough risk assessment. If in any doubt, please seek further information from an Occupational Therapist.**





# SERENITY TOILET SEAT

SMOOTH CONTOURED DESIGN FOR COMFORT AND HYGIENE.



## KEY FEATURES

- Clean design which doesn't draw attention
- Unique three position front bracket
- Fits on square toilets
- Can be immersed for cleaning or sterilised in an Autoclave or Turbex (bulk packs only)


The Serenity range of raised toilet seats make it easier to sit down and get up from the toilet. They are designed to look as close to a standard seat as possible, with smooth edges, concealed fittings and a high gloss finish which is easier to clean, and more attractive.

It is available with or without a lid, which is also sold separately so it can be added later.

The Serenity range has adjustable brackets for the best fit and will even fit onto square toilets. It is easy to install and quick to remove for travel or when no longer needed, without any tools.

The Derby P-Guard can be attached directly to the Serenity seat to add a convenient splash guard (using the fittings supplied with every Serenity Toilet Seat.)

	RETAIL PACKS		BULK PACKS
SIZE	SEAT	SEAT & LID	SEAT
2 inch (5 cm)	64702	64722	64612 Order in 8's
4 inch (10 cm)	64704	64724	64614 Order in 5's
6 inch (15 cm)	64706	64726	64616 Order in 4's

 **220KG / 34 STONE / 485LBS**



## SERENITY LID

If you have a Serenity toilet seat without a lid, it can be quickly added as an upgrade. Lids are available separately in a retail box.



**64620**

Lid Only

## DERBY P-GUARD

Prevents splashing and accidents that sometimes happen when sitting to use the toilet. The P-Guard has two parts - a soft plastic cup and a fixing bracket which allows the cup to be repositioned, bent away or removed.

Clips onto a Serenity seat, or use the included adhesive pad to fix it to a standard toilet seat or commode.



**60341**

Derby P-Guard

BATHROOM



SPECIALIST  
BATHROOM



KITCHEN



OUTDOOR



HOME



# DERBY PRIMA RAISED TOILET SEAT



## KEY FEATURES

- Easy to clean high gloss finish
- Fits securely on to most toilets
- Optional lid
- Fits on square toilets

The Derby Prima Raised Toilet Seat reaches the highest standards in injection moulded toilet seats and is easy to clean, due to its concealed seam.

To give the user confidence, the seat is extremely stable by fixing securely in three places, with two side brackets and a drop nose at the front. Each side bracket has over-moulded rubber grips to ensure a tight fit on to the toilet and will even fit onto square toilets.

It is available in 2 inch (5 cm) and 4 inch (10 cm) raises depending on the lift needed. A matching strong white lid can be supplied, so that the toilet can be used as a bathroom seat if required.

	RETAIL PACKS		BULK PACKS
	Super (no lid)	Deluxe (with lid)	Super (no lid)
<b>2 inch (5 cm)</b>	60912	60903	60913 Order in 8's
<b>4 inch (10 cm)</b>	60914	60905	60915 Order in 5's

6 inch (15 cm) seats are available in our Serenity and Ashby ranges.

 **190KG / 30 STONE / 420LBS**

# DERBY RAISED TOILET SEAT



## KEY FEATURES

- The ultimate quality toilet seat
- Manufactured to exacting standards
- Quality metal fixings and traditional cream colour

The Derby Raised Toilet Seat launched worldwide in 1978 and is now a long established and trusted name. The seat is still produced to the same exacting standards now, including sturdy metal fixing brackets to hold it in place and a high quality barrel hinge for the lid. These features give the Derby seat a long service life. It also has a deep skirt and dipped front.

	NO LID	WITH LID
<b>2 inch (5 cm)</b>	6002	6003
<b>4 inch (10 cm)</b>	6004	6005

 **190KG / 30 STONE / 420LBS**



# ASHBY SLOPED RAISED TOILET SEATS



Designed for comfort and accessibility, the Ashby Sloped features an innovative cut-away design which allows comfortable toilet use for those who need to keep their leg extended. Perfect for individuals with knee joint or hip stiffness, osteoarthritis, or recent lower limb surgery. Experience improved bathroom accessibility without compromising on hygiene or style.



## KEY FEATURES

- Right or left side slope options
- 5 ½ inch (14 cm) rise for easier transitions
- Compatible with most toilet bowl shapes
- Fixings supplied
- Smooth, high gloss, hygienic

**66284** Ashby RHS Sloped Raised Toilet Seat

**66274** Ashby LHS Sloped Raised Toilet Seat

 **190KG / 30 STONE / 420LBS**

# PRIMA LIFT TOILET RAISER

THE DISCREET WAY TO RAISE  
YOUR TOILET SEAT.



## KEY FEATURES

- Use your own seat & lid
- Fits all pan shapes
- Suitable for autoclave cleaning
- 2 inch (5 cm) rise
- Smooth, high gloss, hygienic
- Easily removed
- Fixings supplied



**66190**

Prima Lift Toilet Raiser

 **190KG / 30 STONE / 420LBS**



**190KG / 30 STONE / 420LBS**



BATHROOM



SPECIALIST  
BATHROOM



KITCHEN



OUTDOOR



HOME



# ASHBY LIFT TOILET RAISERS

THE DISCREET WAY TO RAISE YOUR TOILET SEAT.



Elevate your comfort without compromising your style. The Ashby Lift is designed for those who value both functionality and aesthetics in their bathroom. This discreet solution allows you to keep your existing toilet seat and lid while providing the extra height you need. Maintain your bathroom's elegant design and your personal dignity with a subtle upgrade that blends seamlessly into your space. The Ashby Lift: where practicality meets sophistication.

## KEY FEATURES

- Provides a 4 inch (10 cm) toilet seat
- Smooth, high gloss, hygienic
- 2 designs for different bowl shapes
- Continue using your own seat & lid
- Easy, tool-free removal with a unique pivot system
- Fixings supplied



## VERSATILE COMFORT FOR EVERY BATHROOM

### Choose the perfect fit for your toilet:

- Ashby Lift Straight: Ideal for square toilet seats
- Ashby Lift Oval: Designed for traditional toilet shapes
- Experience enhanced safety and convenience
- Safer than a standard raised toilet seat - with a unique bracket fixing that will not work loose after cleaning



- Unique Pivoting System: Allows for easy cleaning without the need to remove, or for deeper cleans the Ashby Lift can be removed and re-installed tool-free
- Flexible Positioning: Location choice to accommodate different seat and toilet bowl shapes and sizes
- Innovative Installation: Top-mounted stainless steel fixing plate eliminates awkward side or under-toilet fitting struggles
- Maintained Aesthetic: Designed to use with your existing toilet seat and lid.



The Ashby Lift doesn't just raise your seat – it elevates your bathroom experience with adaptability, safety, and ease of use, whilst keeping the bathroom looking the same.



**66294** Ashby Lift Oval Toilet Raiser

**66394** Ashby Lift Straight Toilet Raiser



**190KG / 30 STONE / 420LBS**

BATHROOM



SPECIALIST  
BATHROOM



KITCHEN



OUTDOOR



HOME





# ASHBY RAISED TOILET SEATS

STRONG, LONG-LASTING AND SUITABLE FOR AUTOCLAVE USE.

CHOOSE THE RIGHT MODELS AND BRACKETS FOR YOUR NEEDS AND BUDGET.



Perfect for healthcare issue, robust and long lasting and designed to withstand challenging use. The one piece moulding can be totally immersed for cleaning, or sterilised in an autoclave.

Ashby seats can be fitted securely to most toilets in a matter of seconds, locked on with brackets that are easily adjusted by hand. The top of the seat is shaped to distribute weight over a larger area, for comfort and stability.



**190KG / 30 STONE / 420LBS**

## TYPES OF SEAT

### ASHBY

All Ashby seats have a wide cutaway at the front allowing easy access for personal cleaning.



### ASHBY DELUXE

Deluxe models have a strong lid which can be used as a bathroom seat. The lid is supported by a high quality hinge which is sturdy and can be cleaned.



### ASHBY WIDE ACCESS

The wide access model has the widest front and rear cutaways available. It has four brackets creating an extra secure fit which assists in safe side transfers or where there is a lot of movement when sitting down.

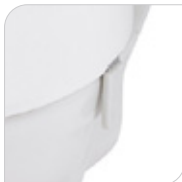


## TYPES OF BRACKET

### STANDARD

■ Product Code: 6101

Three adjustable brackets, two at the sides and one at the front. Made with durable metal fixings for a long life in use.



### SUPER

■ Product Code: 6117

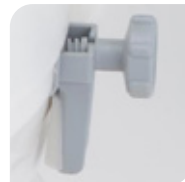
Has our unique easy screw wheels, which are ideal for those with arthritis or a weak grip, or when others in the household regularly prefer to remove the raised toilet seat.



### EASY-FIT

■ Product Code: 60903/BKTPACK

Our most economical brackets, made of plastic with a rubber overmould for a secure hold on the toilet pan. Two brackets at the sides and a fixed drop nose at the front. Combines all the advantages of the Ashby range with cost effective brackets. Fits on square toilets.



■ Products made to order



	SINGLE RETAIL PACKS			BULK PACKS		
NAME	Standard	Deluxe	Wide Access	Standard	Super	Easy-Fit
LID	No	Yes	No	No	No	No
BRACKETS	Standard	Super x 2, Standard x 1	4 x Easy-fit	Standard	Super x 2, Standard x 1	2 x Easy-Fit + moulded front
COLOUR	WHITE			NATURAL		
2 inch / 5 cm	6202	6222		6302 (8's)	6312 (8's)	63122 (8's)
4 inch / 10 cm	6204	6224	62014	6304 (5's)	6314 (5's)	63144 (5's)
6 inch / 15 cm	6206	6226		6306 (4's)	6316 (4's)	63166 (4's)

# ENTERPRISE TOILET SEAT

A HYGIENIC RAISED TOILET SEAT WITH BUILT-IN ARMS.

## KEY FEATURES

- 4 inch raise with built-in arms and lid
- Award winning fixing system
- Can be fitted and removed in seconds

The Enterprise gives support and stability by acting as both a raised toilet seat and a toilet surround rail. The built in arms support the user for an easy transfer; and the 4 inch (10 cm) raised seat allows easier standing from a seated position.

The seat is a comfortable one piece moulding, with no joints or seams to trap dirt or germs.

The unique installation system requires no tools and allows the seat to be used without taking off the original toilet seat. Simply fit the installation bracket, and the Enterprise seat can be fitted, removed and refitted in seconds.

6241/I

Enterprise Toilet Seat



**190KG / 30 STONE / 420LBS**



# NOBI TOILET SEATS

STRONG, STABLE  
AND STYLISH.



## KEY FEATURES

- Integrated arms for support
- Quality stainless steel fixings to suit all toilets
- Compact for smaller bathrooms

The stylish Scandinavian design of the Nobi toilet seat sets the benchmark for all bathroom aids, as it is both practical and attractive, with a high gloss finish.

The Nobi offers a secure, safe and comfortable alternative to traditional toilet seats and fits neatly into smaller bathrooms. It hinges like a traditional toilet and fixes with strong stainless steel brackets that adapt to suit your toilet. The arms give safety and are a vital help when standing.

The Prima Lift can also be bought with the Nobi allowing a 3 inch raise with the safety of the Nobi arms.

## CHOICE OF TWO MODELS



### NOBI CLASSIC

With lid and built in arm rests



### NOBI FAMILY

With removable small aperture seat for children, lid and built in arm rests.

62450

Nobi Classic

62455

Nobi Family



**125KG / 19 STONE / 266LBS**

BATHROOM



SPECIALIST  
BATHROOM



KITCHEN



OUTDOOR



HOME



# PRIMA UNIVERSAL TOILET ARMS

THE IDEAL SOLUTION FOR COMPACT BATHROOMS.

Enhance your bathroom's accessibility. Introducing the Prima Universal Toilet Arms: the ideal solution for compact bathrooms. These arms combine innovation, modern design, and versatility to support your independence.

## KEY FEATURES

- Universal Compatibility: Fits most shapes and sizes
- Enhanced Usability: Can be combined with the existing toilet seat and lid, as well as raised seats, including our Ashby Lift Raisers
- Customisable Comfort: Height adjustable arms to suit your needs
- Flexible Use: Hinged arms allow easy side transfers
- Simple Setup: Quick installation with fixings included
- Extra Support Option: Attachable legs for enhanced stability

**69000**

Prima Universal Toilet Arms

**69001**

Prima Universal Support Leg



Maximize accessibility in your bathroom without sacrificing style or space.



Height adjustable arms



Arms tilt back for easy side transfers



Designed for comfort



Fits under a standard toilet seat (traditional or modern)



Fits under a raised toilet seat



Works with our Ashby Lift range (see page 24)



Features a brushed stainless steel fixing plate with aluminium arms and optional support legs for a modern look.



# PRIMA MULTI-FRAME

## OUR MOST VERSATILE TOILET SURROUND.

### KEY FEATURES

- Unique design that fits around the toilet pan
- Arms correctly positioned for support
- Use frame only, or with toilet seats

The Prima Multi-Frame features an innovative swan neck front which allows the frame to get even closer to the toilet pan. This helps to reduce the trip hazard inherent in all toilet surrounds. It is designed to surround a toilet with stable arms either side of the user, for support.

Users can adjust the frame height and width to best suit their needs. The slip resistant feet help keep it steady in use.

It is easily assembled without the need for any tools, and the 'flat pack' design means it is convenient to store or take travelling.

Comfortable moulded plastic toilet seat which clips easily on to the frame, making it the most versatile frame. Optional clip on arm caps are available.



PRIMA MULTI FRAME

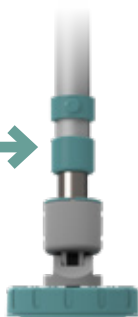


WITH TOILET SEAT



**190KG / 30 STONE / 420LBS**

USE WITH  
PRIMA  
SUCTION  
FEET  
(PAGE 42)



<b>65233</b>	Frame only
<b>65240</b>	Over toilet seat only
<b>65244</b>	Toilet seat and frame together
<b>61530</b>	Optional arm caps (pair)

### ADVANTAGES

- Fits over the top of your existing toilet
- Adjustable legs for more flexibility
- Arms for easy transfer on and off the seat
- All four feet have full contact with the floor
- Weight limit of 30 stone (190kg)
- Available with optional seats that clip on and off the frame quickly

BATHROOM



SPECIALIST  
BATHROOM



KITCHEN



OUTDOOR



HOME



# PRIMA TOILET AID RANGE

## THE DISCREET WAY TO RAISE YOUR TOILET SEAT.

### KEY FEATURES

- Choice of 2 frame styles, horseshoe and standard, to meet your individual needs.
- Designed to fit every type of toilet bowl shape, including square toilets and wash and dry bidets.
- Prima Classic / Prima Horseshoe can be converted easily into commodes.
- Choice of fixed frame or flat pack to accommodate travel and storage.
- Adjustability gives many height options.
- Unique leg feature caters for uneven floors.
- Seats suitable for autoclave or turbex cleaning.
- Seats and frames do not retain water.

### THE STANDARD FRAME HAS 2 SEATS AVAILABLE.

**The Classic** is a flatter seat than most toilet aids. It is contoured for comfort and has unique clips which prevent lateral movement on the frame.

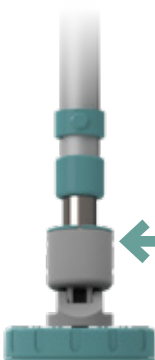
**The Superior** boasts all of the above features and benefits, but with a deep skirt splash guard which sits inside the toilet bowl for added hygiene. Now available as a flat pack, width adjustable option

**The Gentleman's Horseshoe Toilet Aid** has been designed to offer improved comfort for male users. A full open front on both the frame and the seat enables gentlemen to tuck in and avoid spillages.

**Commode options** convert both the Classic and Horseshoe Toilet Aids into commodes by simply attaching a bracket to the frame and adding our Burton Pan which has a capacity of 7 litres.



PRIMA  
SUPERIOR



USE WITH  
PRIMA  
SUCTION  
FEET  
(PAGE 42)

ALSO  
AVAILABLE  
IN **RED**  
OR **BLUE**  
(Page 46)







**PRIMA  
CLASSIC**



**PRIMA CLASSIC  
COMMODE**

**FLATPACK  
VERSIONS ALSO  
AVAILABLE**



**PRIMA GENTLEMAN'S  
HORSESHOE**



**PRIMA GENTLEMAN'S  
HORSESHOE COMMODE**

#### **PRIMA CLASSIC TOILET AID**

<b>68000</b>	Classic seat / Variable height standard frame
<b>68001/FP</b>	Classic seat / Flat pack variable height frame
<b>68005</b>	Classic seat / Variable height standard frame / Burton pan / Pan bracket
<b>68003/FP</b>	Classic seat / Flat pack variable height frame / Burton pan / Pan bracket

#### **PRIMA SUPERIOR TOILET AID**

<b>68010</b>	Superior seat / Variable height standard frame
<b>68011/FB/WA</b>	Superior seat/ Flat pack variable height variable width frame
<b>68011/FP/R</b>	Red superior seat / Flat pack variable height red frame
<b>68011/FP/B</b>	Blue superior seat / Flat pack variable height blue frame

#### **PRIMA GENTLEMAN'S HORSESHOE TOILET AID**

<b>68020/H</b>	Horseshoe seat / Variable height shaped frame
<b>68021/H/FP</b>	Horseshoe seat / Flat pack variable height shaped frame
<b>68025/H</b>	Horseshoe seat / Variable height shaped frame / Burton pan / Pan bracket
<b>68023/H/FP</b>	Horseshoe seat / Flat pack variable height shaped frame / Burton pan / Pan bracket

**LOWEST SETTING:** Top of hand rail: 61 cm **Seat:** = 41 cm

**HIGHEST SETTING:** Top of hand rail: 81 cm **Seat:** = 61 cm



**190KG / 30 STONE / 420LBS**

**BATHROOM**



**SPECIALIST  
BATHROOM**



**KITCHEN**



**OUTDOOR**



**HOME**



# BATHROOM STEPS

KEEP YOUR BALANCE WHEN ACCESSING A BATH OR SHOWER.  
REDUCE THE HEIGHT BETWEEN A BATH AND THE FLOOR,  
FOR SAFETY AND REASSURANCE.



## BAMBERRY STEP

### KEY FEATURES

- Ideal for use throughout your home
- Provides a step up into the bath or shower
- Made from bamboo, with an attractive wave design

The Bamberry Step is perfect throughout the home with its attractive design and high quality finish. Made from bamboo which has natural antibacterial properties and finished in a natural colour. It features a wave design which gives grip and allows water to flow away.

It helps the user access the bath by making the floor level closer to the level the inside the bath to reduce over-balancing.

The Bamberry Step is 4 inch (10 cm) high, with smooth, rounded edges. There are slip resistant pads underneath and the natural water-resistant qualities make it ideal for bathrooms.

**Can also be used in other rooms around the home such as by a bed or where there is a step down to a lower level.**

55920

Bamberry Step



**318KG / 50 STONE / 700LBS**



# ASHBY STEP TWO

ONE STEP, TWO HEIGHTS.

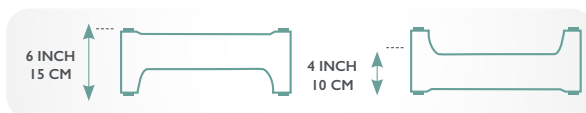


## KEY FEATURES

- Easier and safer access for the bath and shower
- Two heights in one unit
- Large textured step area with slip-resistant feet
- Robust and easy to clean. Suitable for autoclave use

The Ashby Step Two allows users to choose the height closest to the base of the bath by flipping the step over. One side gives a 4 inch (10 cm) step and the other gives a higher 6 inch (15 cm) step. It provides a large textured standing area for both feet, so the user can be steady before stepping over the side of the bath. Once in position, four secure slip-resistant feet help keep the step in place. It features a convenient handle in the middle making it easy to move and carry.

As a single piece moulding the step is easy to clean and can be put into an autoclave.



6296

Ashby Step Two



**190KG / 30 STONE / 420LBS**

ALSO  
AVAILABLE  
IN **RED**  
OR **BLUE**  
(Page 44)



# LANGHAM K40

ADJUSTABLE PLATFORM  
BATHROOM STEP.



## KEY FEATURES

- Strong adjustable step for around the home
- Add or remove sections for the perfect height
- Slip resistant surface ideal for the bathroom

The K40 step is modular, allowing extra sections to be added or removed to different heights as needed.

Each section is 1 inch (2.5 cm) thick and slots into the section below to build a secure, stable platform.

The K40 can be used for bariatric care due to a high user weight limit. It is supplied with four sections and two packs can be used to build a step up to a maximum of 8 inches (20 cm) tall, subject to your own risk assessment.

It features four rubber feet and a textured slip resistant surface.

**LP/K40** Langham Adjustable Platform Bath Step (K40)



**500KG / 78 STONE / 1100LBS**

**Can be used as a bariatric product.**

BATHROOM



SPECIALIST  
BATHROOM



KITCHEN



OUTDOOR



HOME



# PRIMA BATHROOM STEP

USE AS SINGLE STEP OR LINK TO CREATE A PLATFORM OR SET OF STEPS.

## KEY FEATURES

- Adjusts to the right height for you
- Can be used as a single step or linked to create a staircase
- Unique slip resistant design, even when wet
- Tactile soft grip surface

The Prima Bath Step is modular, making it our most versatile bath step. It features a large surface area with raised pads to add grip and give tactile feedback, giving the user additional confidence in the bathroom.

It can be used as an individual step at your choice of height, between 2 - 12 inch (5 cm - 30 cm) - subject to your risk assessment, steps can link together using the link bar to create a larger platform, or several steps up to a bath.

Each box contains a 2 inch (5 cm) step, plus two 1 inch (2.5 cm) raiser sections, four soft feet to reduce slipping and a link bar to connect two steps together, side by side.

It can be used for bariatric care due to a high user weight limit.

**Additional packs of raiser sections can be purchased separately.**

<b>62920</b>	Single retail pack
<b>62925</b>	Bulk pack of bath steps (contains 5)
<b>61920</b>	Bulk pack of additional raiser sections (contains 10)



1. SINGLE STEP



2. PLATFORM STEP



3. STAIRCASE



**318 KG / 50 STONE / 700 LBS**



# PRIMA HOME STEP

THE PRIMA HOME STEP WITH HANDLE IS A PERFECT ADDITION TO THE HOME. IT CAN BE USED ANYWHERE A STEP OR EXTRA HEIGHT IS NEEDED.

## KEY FEATURES

- Safely improve access around your home
- Light and easy to move
- Perfect height at 5 ½ inches (14 cm) for those with hip or knee challenges
- Comes with a height adjustable handle for stability
- Option to add a second handle
- Anti-slip soft touch handle grips
- Unique slip resistant design, even when wet
- Step surface removable for easy cleaning

A stylish and safe step, furthering your reach in any room of the home. Slip resistant features provide a safe platform to stand on and the handle further increases user stability. Particularly useful for exiting the bath or shower.



**62930** Prima Home Step with one handle

**62935** Prima Home Step extra handle

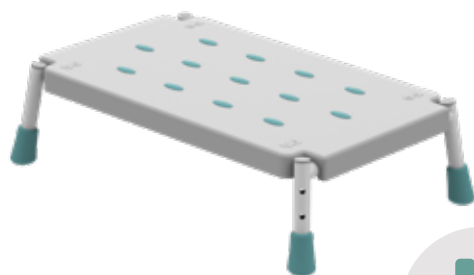
**Max footprint:** 13 x 20 ½ inches  
(332 x 520 mm)

**Handle height:** 32-38 ½ inches  
(825 - 978 mm)

**Step height:** 5 ½ inches (137 mm)



**190KG / 30 STONE / 420 LBS**



BATHROOM



SPECIALIST  
BATHROOM



KITCHEN



OUTDOOR



HOME





# PRIMA GRAB BARS

HIGH QUALITY BARS WITH SOFT SLIP RESISTANT GRIPS.

## KEY FEATURES

- Innovative design with no visible screws once installed
- Soft ribs help to improve grip, even when wet
- Attractive and warm to the touch

The Prima Grab Bar range is high quality, smart in appearance and long-lasting in use.

The grab rail exterior is made of white plastic with ribbed grips, over-moulded horizontally on to the rail to prevent the user's hand slipping down the bar when wet.

It has been ergonomically designed with an oval cross-section, to match the human grip and features a strong concealed aluminium core for strength. The plastic exterior is always warm to the touch.

They can be installed vertically or horizontally, alone or in combination. The strong fixing points are hidden by two end caps.

**Outdoor grab bar in dark green or anthracite also available, see page 57.**

	WHITE RETAIL PACK	WHITE BULK PACK	MINT & WHITE BULK PACK
Angled 13" (33 cm)	6547	6553	6519
Angled 16" (40 cm)	6548	6554	6520
Straight 12" (30 cm)	6549	6555	6521
Straight 16" (40 cm)	6550	6556	6522
Straight 18" (45 cm)	6551	6557	6523
Straight 24" (60 cm)	6552	6558	6524

**Our high quality bar is now available in grey, providing a more contemporary look which matches modern bathrooms.**

**Grey available in 3 retail packed options**

12" (30 cm) Straight	6540
18" (45 cm) Straight	6542
16" (40 cm) Angled	6541



**NOW  
AVAILABLE IN  
ANTHRACITE  
GREY**



**160KG / 25 STONE / 350 LBS**



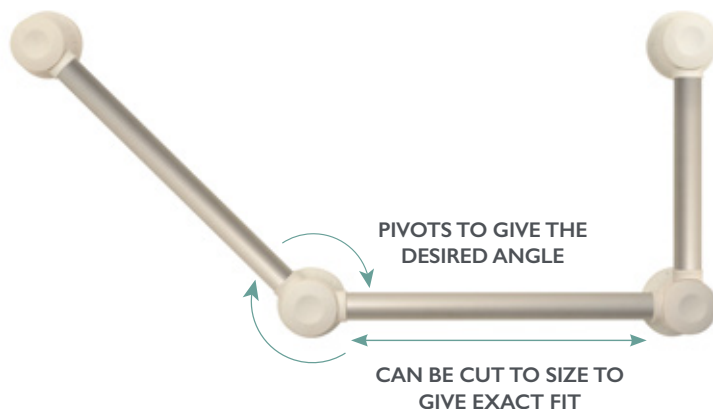
# PRIMA PIVOT GRAB BARS

VERSATILE GRAB BAR SYSTEM WITH MULTIPLE BAR LENGTHS AND ADJUSTABLE ANGLE.

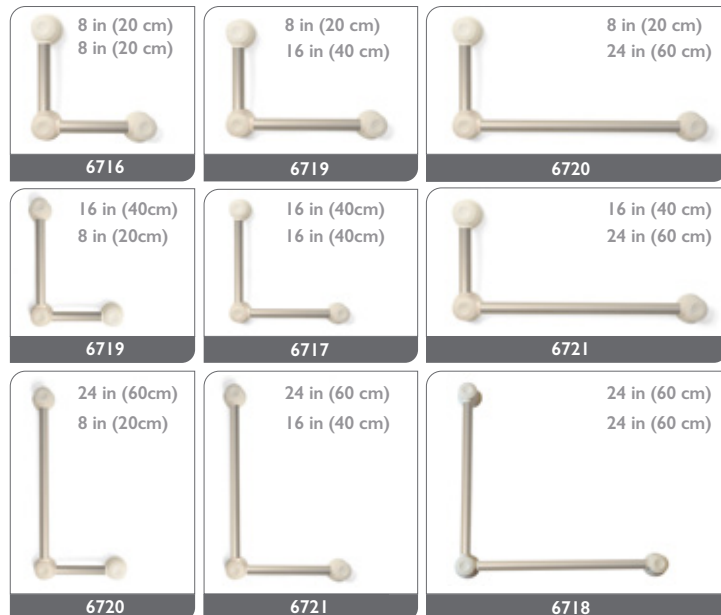
## KEY FEATURES

- Create the perfect configuration for your needs by adding multiple bars
- Install with your choice of angle
- Cut to size for the perfect fit

The Pivot grab bar system is brilliantly adaptable and fits perfectly into a bathroom of any size and shape. Build a rail for your exact needs, using as many sections as you need, at your choice of angles. The aluminium finish can be cut to size to create the perfect fit.



## RETAIL PACKS



## AVAILABLE COLOURS

● Aluminium

Each retail box contains straight bars as specified plus 2 x end assembly and 1 x middle assembly.

BULK PACKS (MULTIPLES OF 50)	
SIZE	ALUMINIUM
8 inch (20 cm)	6735
16 inch (40 cm)	6736
24 inch (60 cm)	6737
END ASSEMBLY	6733
MIDDLE ASSEMBLY	6734



**160KG / 25 STONE / 350 LBS**



BATHROOM



SPECIALIST BATHROOM



KITCHEN



OUTDOOR



HOME



# ASHBY GRAB BARS

STRAIGHT AND ANGLED ALL PLASTIC GRAB BARS.



## KEY FEATURES

- Tough, high quality fixing points
- Purpose designed for more bathroom safety
- Ribs and textured finish for extra grip

Made of easily cleaned white plastic with a textured finish for extra grip, even when wet. Available in straight and angled options. The angled bar allows part of the bar to support the arm, for anyone unable to take full strain through the hand. The straight bars can be installed vertically or horizontally, providing stability and assistance wherever it is needed.

### Angled

**6218/B** 13 inch (33 cm)

### Straight

**6257/B** 12 inch (30 cm)

**6219/B** 18 inch (45 cm)

**6220/B** 24 inch (60 cm)



**Bulk packs of 20**

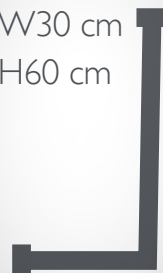


**115KG / 18 STONE / 254 LBS**

Available as a Shower Kit (6260) with a 30 cm (12 inch) bar, 60 cm (24 inch) bar and corner bracket.

ALSO  
AVAILABLE  
IN **RED**  
OR **BLUE**  
(Page 44)

W30 cm  
H60 cm



# BATH BOARDS

HELPING THOSE WITH STIFF JOINTS OR POOR BALANCE TO HAVE A SAFE AND RELAXING SHOWER OR BATH.

## COSBY BATH BOARD



### KEY FEATURES

- Comfortable contoured surface
- Strong and slim
- Adjusts easily and fits securely to most baths
- Designed to match our Cosby bath seat
- 4 independently adjustable pillars allows good fit across wider range of baths.

Slim line 1 inch (25 mm) thick design with a unique combination of a waterproof plywood base and a plastic seating area without any slats or holes shaped for comfort and drainage. Four independently adjustable pillars hold the bath board in place and secure it against the sides of the bath with rubber grooves for increased grip. It has the greatest range of adjustability, for straight and curved edges, suitable for baths with an internal measurement of 19 - 27.5 inch (48 - 70 cm).

**Bariatric version available. (Page 48)**



**190KG / 30 STONE / 420 LBS**

## DERBY BATH BOARD



### KEY FEATURES

- Strong and secure over bath board
- Slats to stop water collecting
- Easy to use and clean, by hand or autoclave, ideal for recycling
- Integrated soap dish prevents overstretching
- Rear uplift indicating the end of the board assists confidence and balance.
- 4 independently adjustable pillars allows good fit across wider range of baths.

The one piece plastic moulding is lightweight, strong and hygienic and able to be autoclaved. It has a slatted design, a coccyx cutaway for comfort, a soap dish at both ends and a slight rear uplift to indicate the back of the board. Four independently adjustable rubber ended pillars fit securely in a variety of bath shapes and are ideal for narrow baths. An optional handle is available for a firm gripping point.



**190KG / 30 STONE / 420 LBS**

COMPARISON CHART	COSBY BATH BOARD 6407	DERBY BATH BOARD 6007
Grab Handle	No	Optional (code 6007/H)
Bath Suitability	Adjustable (48-70cm measured inside)	For narrow baths (44 - 63 cm measured inside)
Side Transfer	Best	Good
Autoclave Suitability	No	Yes



BATHROOM



SPECIALIST  
BATHROOM



KITCHEN



OUTDOOR



HOME



# BATH SEATS

FOR USE BY PEOPLE WHO HAVE DIFFICULTY LOWERING FULLY INTO THE BATH. USE ON ITS OWN, OR WITH A BATH BOARD.

## COSBY BATH SEAT



### KEY FEATURES

- Lightweight and quick to remove
- Smooth contoured seat for comfort and drainage
- One piece moulding without slats

A sturdy but lightweight seat without any slats, making it comfortable to sit on and easy to clean. It has a textured surface to help prevent slipping and a cutaway at the front to make washing easier. The four legs have large suckers to fix the seat securely to the base of the bath. It is only suitable for baths with a smooth, non textured base.

6408

Cosby Bath Seat



190KG / 30 STONE / 420 LBS

## DERBY BATH SEAT



### KEY FEATURES

- Available in two heights
- Width adjustable legs for narrow baths
- Easily removed for cleaning

Designed to sit neatly in a bath, with a comfortable yet slip-resistant seat and sturdy ABS construction for durability and security. The legs are width adjustable to suit narrow baths and four large suckers hold firmly to the base of the bath. It is only suitable for baths with a smooth, non-textured base.

6006/W

6 inch (15 cm)

6008/W

8 inch (20 cm)



190KG / 30 STONE / 420 LBS

COMPARISON CHART	COSBY BATH SEAT	DERBY BATH SEAT
Bath suitability	Smooth, non-textured base	Best for narrow baths
Heights	8 inch (20 cm)	6 inch or 8 inch (15 cm / 20 cm)
Front cutaway?	Yes	No





# ASHBY BATH SHORTENER

REDUCES THE LENGTH OF A BATH.



## KEY FEATURES

- Safety in the bath for shorter people
- Prevents slipping down
- Four suckers attach securely



Reducing the internal length of the bath, it allows shorter people to rest their feet on something solid for added safety and comfort.

Four large suckers secure the Shortener to the base and side of the bath and are easily removed when needed.

A hole in the base allows water to enter; and a breather hole under the handle allows air to escape, meaning that it doesn't interfere with filling or draining the bath.

The Ashby Bath Shortener is only suitable for baths with a smooth, non-textured base.

6290

Ashby Bath Shortener



**190KG / 30 STONE / 420 LBS**

# DERBY TAP TURNERS

PROVIDES ADDITIONAL LEVERAGE TO TAPS.



## KEY FEATURES

- Suitable for both cross head and crystal taps
- Large colourful handles for easy identification
- Quick to fit, no tools needed

Standard household taps can be difficult to turn, especially for those with poor grip or arthritis. Derby Tap Turners can solve this problem by providing large textured handles which are easier to push.

The screw-in handles grip the tap with a soft non-slip inner lining, providing the extra leverage needed to turn the taps with ease. They can be used on both capstan and crystal type taps, with no tools required.

Colour coded in red and blue to allow users to quickly identify the correct tap.

60802

Pair of Tap Turners - Mail Order box

60800

Bulk Pack of 5 pairs - Retail box



BATHROOM



SPECIALIST  
BATHROOM



KITCHEN



OUTDOOR



HOME



# PRIMA SUCTION FEET

AN INNOVATIVE NEW PRODUCT TO FIX TOILET AIDS, SHOWER AND PERCHING STOOLS TO THE FLOOR WITHOUT DAMAGE.

## KEY FEATURES

- Provides improved stability for chairs and frames
- Floor fixing with NO drilling required
- Pivoting head to fit a range of leg angles
- Made using engineering grade materials to support up to 318 kg

Prima Suction Feet provide improved stability, without damaging your flooring. They can replace the feet of almost all round tubular frames, making your daily living aids more secure to use and reducing the risk of tipping.

Designed to accommodate round frames from 19mm to 25mm in diameter – the suction feet are provided with three different sized inserts which each come as two sections, so you can combine the different sizes to create the perfect fit. The unique pivoting head accommodates a range of leg angles.

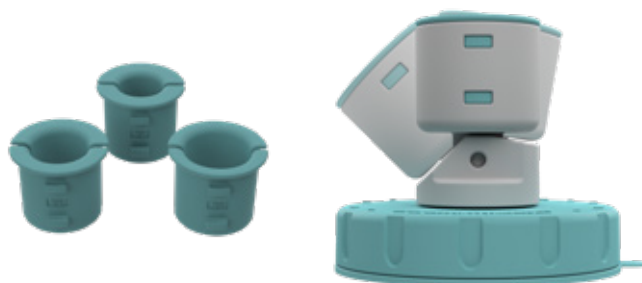
**68030** Prima Suction Feet - 1 set of 4 feet

**68035** Prima Suction Feet bulk pack - 5 sets of 4 feet

**Diameter:** 3 ½ inches (85 mm)



**318KG / 50 STONE / 700 LBS**



### CAN BE USED WITH:

- Shower chairs
- Toilet frames
- Toilet aids
- Metal framed commodes
- Perching chairs
- Steps with handles



# PRIMA MODULAR SHOWER CHAIR

AN ATTRACTIVE AND PRACTICAL SHOWER CHAIR.

## KEY FEATURES

- Aluminium will not leave rust marks in the shower
- Lightweight and packs down for travel
- Great height adjustable range from 16.5 - 22.5 inch (42 - 57 cm)

This modular shower chair can be made into a simple stool, with arms or a full chair with a smooth contoured backrest. Each part simply clips together for easy assembly without the use of tools.

Made from aluminium, it is rust resistant and lightweight. It features height adjustable legs fitted with rubber ferrules to provide grip and help prevent slipping, even on wet surfaces. Holes in the metalwork help to prevent water collecting inside.

**This is part of the Prima Modular 3 in 1 Chair Range, see page 50 for the Perching Chair.**

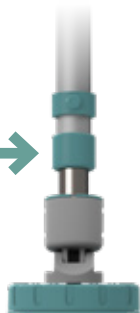


**190KG / 30 STONE / 420 LBS**

**66173**

Shower Chair with Arms and Back  
(supplied in a small retail box)

USE WITH  
PRIMA  
SUCTION  
FEET  
(PAGE 42)



BATHROOM



SPECIALIST  
BATHROOM



KITCHEN



OUTDOOR



HOME



# DEMENTIA CARE AND HIGH CONTRAST PRODUCTS

FOR PEOPLE WITH DEMENTIA RELATED VISUAL RECOGNITION DIFFICULTIES OR VISUAL IMPAIRMENTS.

A white toilet and grab rail against white tiles can make it hard for people to find their way around the bathroom, which can result in anxiety and loss of dignity. Red is a colour associated with being alert and it attracts attention. Research has shown that increased brain wave activity can stimulate the production of adrenalin in the bloodstream. Therefore by using highly visible, high contrast colours for grab bars and toilet seats, it allows the user to recognise

and understand their environment - boosting their confidence and independence.

However, sometimes one size does not fit all and red coloured items do not work for everyone. To address this, we also make these products in a deep blue colour which is still highly visible and high contrast against a white bathroom suite.

## RED AND BLUE ASHBY GRAB BARS

Red or Blue Ashby grab bars give easy visibility and recognition, helping to prevent falls.



**ASHBY**  
GRAB RAILS  
STRAIGHT



**ASHBY**  
GRAB RAILS  
ANGLED

	RED	BLUE
13 inch Angled (33 cm)	<b>6268/B</b>	<b>6278/B</b>
18 inch Straight (45 cm)	<b>6269/B</b>	<b>6279/B</b>
24 inch Straight (60 cm)	<b>6270/B</b>	<b>6280/B</b>
<b>(Bulk packs of 20)</b>		

See Ashby Grab Bars on page 32 for more information

## RED AND BLUE ASHBY TOILET SEATS

One piece moulding in high contrast colours, setting the standard for ease of use, comfort and durability.

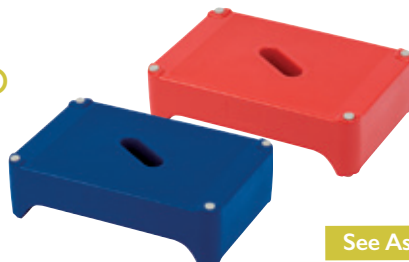


	RED	BLUE
2 inch (5 cm)	<b>62172</b>	<b>62182</b>
4 inch (10 cm)	<b>62174</b>	<b>62184</b>
6 inch (15 cm)	<b>62176</b>	<b>62186</b>

See Ashby Raised Toilet Seats on page 26 for more information

## RED AND BLUE ASHBY STEP TWO

A Red or Blue bath step with two heights for easier and safer bath access.



**6296/RED** Red Ashby Step Two

**6296/BLUE** Blue Ashby Step Two

See Ashby Step Two on page 33 for more information



# BARIATRIC CARE PRODUCTS

A RANGE OF PRODUCTS DESIGNED WITH A HIGH MAXIMUM USER WEIGHT OF 250KG OR MORE.

## BIG JOHN COMMODE AND TOILET AID

### KEY FEATURES

- 2-in-1 design with the Big John toilet seat
- Gives a 318kg weight limit to any toilet
- Provides two arms to make rising easier
- Use as an over-toilet frame or as a commode

This versatile product combines our large, comfortable Big John toilet seat with a strong height adjustable frame. It offers additional stability, with two arms to support the user and legs which have four ferrules sitting flat on the floor to provide a steady base. The lowest seat height is just 15 inch (39 cm) to a maximum of 21 inch (53 cm). Use as an over-toilet frame or as a freestanding commode with the included commode pan.

It arrives flatpack and easily packs down again for travel or storage.

**66250/SET**

Big John Commode



**318KG / 50 STONE / 700 LBS**

USE WITH  
PRIMA  
SUCTION  
FEET  
(PAGE 42)



SPECIALIST  
BATHROOM



KITCHEN



OUTDOOR



HOME



# RED & BLUE PRIMA SUPERIOR TOILET AIDS

Red and Blue Prima Superior Toilet Aids were created for those with dementia related recognition difficulties and those with visual impairments.

Using highly visible, high contrast colours, they enable the user to recognise and understand their environment - boosting their confidence and independence. The sleek looking Prima Superior seat is contoured for comfort and its unique clips prevent lateral movement of the seat on the frame.



USE WITH  
PRIMA  
SUCTION  
FEET  
(PAGE 42)

The frame is height adjustable and has additional height options on one leg to cater for uneven floors. The colour coordinated and angled ferrules provide excellent grip.

The Prima Superior seat has a deep skirt which sits inside the bowl for added hygiene. The Coloured Prima Superior Toilet Aid is supplied flatpack so it is easy to store or take travelling.



**190KG** / 30 STONE / 420 LBS

See page **30** for more information.



# DERBY CORNER COMMODE

VERSATILE CORNER DESIGN.

## KEY FEATURES

- Extra wide 65 cm access between the arms
- Good for side transfers
- Large seating area
- Sturdy construction

The innovative corner design of the Derby Corner Commode makes it ideal for larger users. The wide 65cm opening between the arms provides unrestricted access, which is especially beneficial for those who find a traditional commode style uncomfortable.

The robust construction and sturdy legs provide a high level of stability, while the large contoured seating area make this a comfortable choice for any user.

The unique corner shape of the Derby Corner Commode provides access from the front, or either side, making side transfers easier:

Under the seat cushion is a three-position cassette holding the commode pan. It can be securely positioned to the left, right or centre, meaning that the chair can be conveniently positioned in the corner of a room, or directly alongside a bed.

The sturdy legs are constructed from polished hardwood, combined with a plastic seat body and backrest. The commode cassette is concealed under a comfortable padded vinyl upholstered seat cushion.

Available in two different sizes, with a seat height of either 49 cm or 54 cm



### COLOURS AVAILABLE:

Brown with brown  
seat cushion

Grey with blue  
seat cushion



**55085/BR**



Regular Derby Corner Commode, brown

**55085/GYBL**



Regular Derby Corner Commode, grey with blue seat

**55087/BR**



Tall Derby Corner Commode, brown

**55087/GYBL**



Tall Derby Corner Commode, grey with blue seat



**254KG / 40 STONE / 560 LBS**



SPECIALIST  
BATHROOM

KITCHEN

OUTDOOR

HOME

# BIG JOHN TOILET SEAT

75% LARGER SEAT AREA.



## KEY FEATURES

- Attractive and comfortable
- 75% more seat area than standard seats
- Ideal for side transfers due to high grip bumpers

The Big John Toilet Seat gives more support for those who find a standard toilet seat uncomfortable by increasing the seat width to 19 inch (48 cm) and adding a slightly higher raise of 1.5 inch (4 cm). It also has a larger aperture than many other seats.

For installation onto virtually every toilet, simply remove the existing seat and attach the Big John through the toilet pan using the two rust-resistant bolts and fixings.

Made to a high standard with sturdy bumpers underneath to create a stable seat and a high gloss finish with matching lid.

**66234**

Big John Toilet Seat



**380KG / 60 STONE / 840 LBS**

- See pages 8 & 9 for Bariatric furniture raisers.



# COSBY HEAVY DUTY BATH BOARD

MORE SAFETY AND COMFORT.



## KEY FEATURES

- Our strongest bath board
- Held securely in place at four points
- No slats, for a comfortable shower or bath

This Heavy Duty Bath Board has the same design as the Cosby Bath Board (page 39) but has additional support underneath which gives a higher max user weight.

This bath board provides ample support to give the user more confidence when bathing.

Adjustable and easy to fit with four screw in pillars which adjust to the angle of the bath.

**64075**

Cosby Heavy Duty Bath Board



**300KG / 47 STONE / 658 LBS**

- See pages 32 & 33 for Bariatric steps.





# KITCHEN

WE ARE ALWAYS LOOKING FOR  
NEW WAYS TO MAKE EVERYDAY  
TASKS EASIER.

Our Kitchen range provides valuable assistance for those with weak grip or reduced mobility, helping them to increase their independence and enjoy being in the kitchen.



KITCHEN



OUTDOOR



HOME



# PRIMA MODULAR PERCHING CHAIR

MORE COMFORT WHEN DOING KITCHEN TASKS.



USE WITH  
PRIMA  
SUCTION  
FEET  
(PAGE 42)

## KEY FEATURES

- Angled seat for comfort while doing household jobs like cooking and ironing
- Adjustable legs to ensure ideal height for the user
- Quick to assemble and easy to clean

The Prima Modular Perching Chair positions the user in a semi-standing position so they are more comfortable while doing kitchen tasks and at the right height for work surfaces. The sloping seat and arm rests make it easier to rise out of the chair and the smooth contoured back rest gives more comfortable support. It is height adjustable, so the user can easily adapt it to perfectly meet their needs.

Each leg has a ferrule at the end which provides grip, even on wet surfaces, and holes in the metal work help to prevent water collecting inside.

This is part of the Prima Modular range, see page 43 for the shower chair.

**66153** Prima Perching Chair



**190KG / 30 STONE / 420LBS**



# PRIMA HOME STEP

CAN BE USED ANYWHERE A STEP OR EXTRA HEIGHT IS NEEDED.

## KEY FEATURES

- Height adjustable handle for stability
- Light and easy to move
- Removable step surface for easy cleaning

The Prima Home Step is ideal for getting to the top of hard to reach cupboards without over stretching.

The height adjustable handle provides stability and the slip resistant step surface provides a safe and steady platform to stand on.

The step height of 5 ½ inches (14 cm) has been especially designed to suit those with hip or knee challenges.



USE WITH  
PRIMA  
SUCTION  
FEET  
(PAGE 42)

**62930** Prima Home Step with one handle

**62935** Prima Home Step extra handle

<b>Max footprint:</b>	13 x 20 ½ inches (332 x 520 mm)
<b>Handle height:</b>	32-38 ½ inches (825 - 978 mm)
<b>Step height:</b>	5 ½ inches (137 mm)



**190KG / 30 STONE / 420 LBS**



# DERWENT TROLLEY

ASSISTING THOSE WHO ARE UNSTEADY ON THEIR FEET.

## KEY FEATURES

- Transports items easily around your home
- Move hot food and drinks with more safety
- Maintains independence

Enables the user to safely transfer food or heavy items from one room to another. The trolley has two heat resistant melamine coated shelves and an attractive beech frame.

The top shelf is at the ideal height for sliding a plate on from the worktop and the lower shelf has a cutaway for the user's legs. The castors have rubber tyres for easy manoeuvring across a range of floors.



		TRAY SIZE	CASTOR SIZE
5572	Standard	21½ inch (55 cm)	3inch (7.5 cm)
5573	Compact	15½ inch (40 cm)	3inch (7.5 cm)
5574	Economy	15½ inch (40 cm)	2inch (5 cm)



**15KG / 2.3 STONE / 33LBS**



# DERBY SPILL NOT

HOLDS JARS IN PLACE FOR EASY OPENING.

## KEY FEATURES

- Open jars and bottles of many shapes and sizes
- One hand operation
- Hold jars and bottles steady preventing spills

Assists those with limited grip or the use of only one hand to open jars and bottles. The rubber grip holds the jar steady when opening or spooning out the contents to prevent spillage.

Three inverted rubber cones are used to hold a container steady such as drinks bottles or child proof medicine containers, from 1 inch (2.5 cm) to 4 inch (10 cm) in size. A further three opener cones are included to make opening tricky jars easier.

A rubber base helps to stop the Spill Not moving on smooth surfaces and the unique design makes it a smart addition to your kitchen.



60171

Derby Spill Not



# DERBY PREP BOARD

MAKES MAKING SANDWICHES  
A BREEZE.

## KEY FEATURES

- Designed for single hand use
- Makes it easier to prepare food
- Hygienic plastic surface for quick cleaning

A food preparation board which creates a stable preparation surface for spreading or slicing with one hand.

Designed for those with limited hand use. The board is held in place by non-slip contact pads, and a curved lip which rests against the work surface.

The rear of the board keeps food in place, preventing it from slipping around when spreading, or when picking the food up off the board.



6029/W

Derby Preparation Board

# DERBY TIPPER

LIFTING A HEAVY KETTLE IS NOW  
A THING OF THE PAST.

## KEY FEATURES

- Pour a kettle or teapot without having to lift it
- Makes your existing kettle safer and lighter
- Heat resistant platform provides stability when pouring

Boiling a kettle is an everyday task, but it can be difficult for those with a physical tremor or a weak grip. The Tipper helps to solve this problem by removing the need to lift the kettle, making it lighter and safer.

A Velcro strap is included to anchor the kettle to the Tipper:

An optional stability base is available, which helps to secure tall jug kettles and provides a tray to catch any drips.

We recommend using a small jug to fill the water, so that there is no need to lift the kettle off the Tipper.



60315/W

Derby Tipper & Base (complete)

6031/W

Derby Tipper

61031/W

Stability Base for Tipper





# OUTDOOR

**OUR OUTDOOR RANGE  
OFFERS ASSISTANCE FOR THOSE  
WITH REDUCED MOBILITY.**

Simple additions like a half step or grab bar  
can make a world of difference, helping  
people to get out and enjoy the  
great outdoors.



OUTDOOR



HOME



# FULL WIDTH HALF STEPS

DEVELOPED FOR THOSE WHO FIND IT DIFFICULT  
GETTING IN AND OUT OF THEIR HOMES.

These steps are designed to halve the height between the door and the ground, allowing the user to be steady on the large surface before making the next step down. Our plastic half steps are built for the outdoors, being rust resistant and long-lasting even in cold or heat. The 30 inch (75 cm) width gives plenty of room for both feet to be comfortable and ensure balance.

## GETTING THE BEST FROM YOUR HALF STEP

- With many of our Half Steps a handle may be added.
- Should you choose a step only, you might wish to consider adding a grab bar
- A grab bar like our Prima Outdoor Grab Bar positioned next to the step, can help the user to make a steady transfer.
- We recommend treading centrally onto the step surface rather than onto the edges of the step, ideally turning sideways using both hands on the grab bar.
- All of our half steps fit the whole width of a door, for maximum ease and safety.



## BIGFOOT HALF STEP

The BigFoot Half Step is the ultimate outdoor step.

Support handles are available, offering a great solution to avoid permanently fixing a grab rail by the door. One or two handles can be attached by simply clipping in to the step, and they are easily removed for transport.

The new step surface gives an impressive 35 stone (220kg) maximum user weight, with anti-slip grips to give our best possible slip resistance on the step surface.

The height can be adjusted to make the perfect level to step out from your door. The height of the BigFoot Half Step can be adjusted from 3 ½ - 4 ½ inches (9cm - 11 cm) and using the height adaptor (included) from 5 ½ - 6 ½ inches (14 cm - 16 cm)

**Comes with a floor fixing kit for use with support handles.**



**220KG / 35 STONE / 485LBS**



**66111** BigFoot Half Step

**66115** BigFoot Half Step Support Handle (single)

- Linking kit also available to connect two steps for bigger footprint.





# DERBY HALF STEP

FEATURES A SLIP RESISTANT MAT  
AND ADJUSTABLE LEVELLING FEET.

The Derby Half Step gives users additional stability when stepping down from the door. It has four feet that adjust to the level of the ground to provide a secure platform for the user. It also features a slip resistant rubber mat which simply locates within the raised sections of the step surface and can be removed for cleaning.



66091

4 inch (10 cm)



**220KG / 35 STONE / 485LBS**

- Now also available in yellow for improved visibility and contrast

66091/YELLOW

4 inch (10 cm)

# LANGHAM HALF STEP

AN ATTRACTIVE,  
COST-EFFECTIVE STEP.

Designed with clever features like a textured surface to provide grip and edges that allow rain to run off, preventing water collecting on top. The Langham Half Step has four feet that adjust to suit the ground giving a safe platform to step off or on to.



LP/PHS

4 inch (10 cm)



**220KG / 35 STONE / 485LBS**

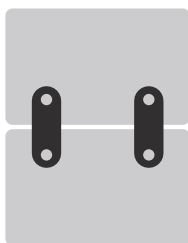
## KITS FOR DERBY AND LANGHAM STEPS:

### LINKING KIT

The Linking Kit, fitted to the underside of the step allows two Derby or Langham Half Steps to be linked together, making a large platform step suitable for walking frames.

61094

Linking Kit



### FIXING KIT

A Security Fixing Kit is available to fix a step to the ground, ensuring stability and preventing theft.

61095

Security Fixing Kit



# METAL HALF STEPS

OUR METAL HALF STEPS PREVENT TRIPS AND FALLS AND CAN ACCOMMODATE A WALKING FRAME.

## K30 METAL HALF STEP AND HANDLES

The K30 Half Step is strong and stable and features slip resistant feet which can be adjusted to the level of the ground. It also has a slip resistant tread on the top for added grip.

Where a walking frame is needed, you may find the K30L Half Step helpful, as it has a larger surface suitable for the user and their walking frame.

The new handles may be retro-fitted to the metal steps to add an extra element of safety and confidence. This is particularly helpful to add balance when stepping down.



**190KG / 30 STONE / 420LBS**

LP/K30	Standard Metal Step
LP/K30L	Large Metal Step
LP/K30H	Handle for Standard Metal Step
LP/K30LH	Handle for Large Metal Step



## METAL RAMP WEDGE

The access ramp gives that little bit of extra help at a threshold. Really helpful with walker frames, trolleys and scooters.

Made from aluminium so rusting is not a concern, its checker plate finish provides a slip resistant surface.



**150KG / 23 STONE / 322LBS**

	HEIGHT
LP/RW2	1 inch (2.5 cm)
LP/RW5	2 inch (5 cm)
LP/RW9	3 inch (7.5 cm)





# PRIMA OUTDOOR GRAB BAR

A WELL SITUATED GRAB BAR CAN MAKE ALL THE DIFFERENCE TO THE SAFETY AND CONFIDENCE OF USERS OUTSIDE THEIR HOME.

## KEY FEATURES

- Soft horizontal ribs help to improve grip, even when wet
- Strong plastic bar which is warm to the touch, unlike metal
- Concealed aluminium core for a high maximum user weight

The Prima Outdoor Grab Bar is the ideal rail for outside the front or back door, helping users get in and out of their home.

The subtle colour is a lot more discreet than white metal rails and can blend into its surrounding when positioned on brick work.

It is weather resistant, and features our unique Prima rubber grips which help to prevent the user's hand slipping, even when wet. It is always warm to the touch, and has an oval cross-section which ergonomically matches the human grip.

Grab bars can be subject to some hefty pulls and sudden tugs, so they are made from robust materials and have strong hidden fixing points. The Prima Outdoor Grab Bar has a high maximum load limit of 160kg / 25 stone, due to a concealed aluminium core running through the middle of the bar.

It is essential that grab bars are fitted competently, according to the instructions, or seek professional advice from a qualified tradesperson. Fixings are not supplied.

6537	Single Retail Pack
6538	Bulk Pack (order in 20's)

### Anthracite grey available in 3 retail packed options

6540	12" (30 cm) Straight
6542	18" (45 cm) Straight
6541	16" (40 cm) Angled

 **160KG / 25 STONE / 350LBS**



**NOW  
AVAILABLE IN  
ANTHRACITE  
GREY**

Our high quality bar is now available in anthracite grey, providing a more contemporary look to your home.



# CEREBRA SLEDGE

## BEAUTIFUL SLEDGE FOR CHILDREN WITH DISABILITIES.

Gordon Ellis & Co are proud to make these high quality wooden sledges for Cerebra, with a seat on the back for parents or siblings to join in.



### KEY FEATURES

- Moves in the snow when wheelchairs get stuck
- Seat on the back for parents or siblings to join in
- Adjustable straps and seat angle

The Cerebra Sledge was developed for Sarah, who had to sit inside while other children in the village went off playing in the snow. She needed a fully supportive seat on a sledge that would not get stuck in the snow like her wheelchair. The sledge has a low centre of gravity and is fitted with straps for safety, armrests and a corded lead to pull it around or back up the hill.

85-855

Cerebra Sledge



Seat width

14 INCH  
36 CM







# HOME

## 160 YEARS OF FURNITURE EXPERTISE.

Our company has traditional woodworking skills dating back to 1860. We continue to apply this with care and know-how today in our range of bedroom commode chairs.



# OVER 160 YEARS OF FURNITURE MAKING

OUR FURNITURE COMMODE CHAIRS HAVE HELPED THOUSANDS OF PEOPLE TO MAINTAIN THEIR INDEPENDENCE, DIGNITY AND SAFETY.

## COMMODE CHAIRS

For someone who has difficulty getting to the bathroom from their bed, a bedside commode chair could be the answer. Our commodes come in a range of different styles and many are disguised as regular chairs, fitting in with the rest of the furniture in the room.

**Before choosing your commode, you need to consider your needs:**

- How discreet do you need it to be?
- Do you need to be able to adjust the height of the commode?
- Would a bariatric commode or a compact commode be more suitable?
- Do you need to remove the cassette for cleaning?
- Normal commode use, or new flushing and bidet options?

## ASHBY AND BURTON COMMODE PANS

All our commodes are easy to keep clean and feature our unmatched Lock and Lift Lid, which locks the lid firmly down, making it easy to carry. The unique handle on the back of the pan helps the user to keep a steady grip for spill free emptying. The contoured shape is suitable for both men and women and blends into the seat area of our commodes for extra comfort.



**ASHBY** COMMODE PAN  
(CAPACITY 3½ LITRES)

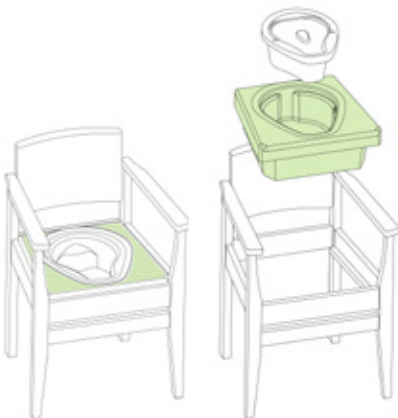


**BURTON** COMMODE PAN  
(CAPACITY 7 LITRES)

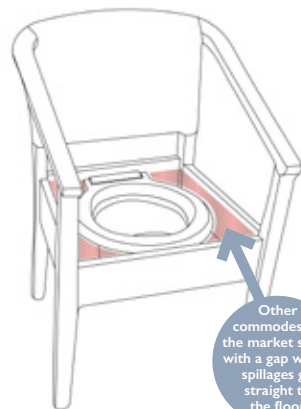
## COMMODE CASSETTE

In all of our furniture commodes, the commode pan sits in a fully sealed cassette unit, making it more hygienic, easier to keep clean and greatly reducing the risk of any spills.

In some of our commodes the cassette unit is fixed in place, in others it is fully removable.



For peace of mind, all of our furniture commodes include a **fully sealed cassette unit**, meaning that any spills or 'misfires' can be easily cleaned.



Other commodes on the market suffer with a gap where spillages go straight to the floor

In a commode **without a cassette** the area highlighted is open, offering no protection from spills.





## COMPARE OUR COMMODES

	WALTON	DERBY BASKETWEAVE	DELUXE	ROYALE	ROYALE EXTRA WIDE	ROYALE FLUSHING	DEVON	ASHBY	DERBY CORNER COMMUNE	DIGNITY	TIMBERRY SCANDI	TIMBERRY KURVE
Most discrete in use	✓	✓										✓
Height adjustable	✓							✓				
Plastic and metal construction	✓							✓				
Flushing						✓						
Best for bariatric use					✓				✓			
Best for smaller rooms	✓	✓	✓				✓					
Flat pack available				✓	✓		✓				✓	✓
Wash and dry bidet										✓		
Hinged Seat				✓							✓	
Removable cassette	✓		✓	✓	✓						✓	
High weight load									✓			

### AVAILABLE COLOURS



Basketweave



Flowerbasket



Oatmeal



Blue



Beige



Green



Brown



Pink



Navy



Grey



# WALTON ADJUSTABLE COMMODE

STYLISH, HEIGHT ADJUSTABLE COMMODE WHICH BLENDS PERFECTLY WITH THE HOME.

## KEY FEATURES

- Modern style with choice of designs
- Height adjustable for comfort
- Easy-to-clean plastic and aluminium
- Burton commode pan with Lock and Lift Lid

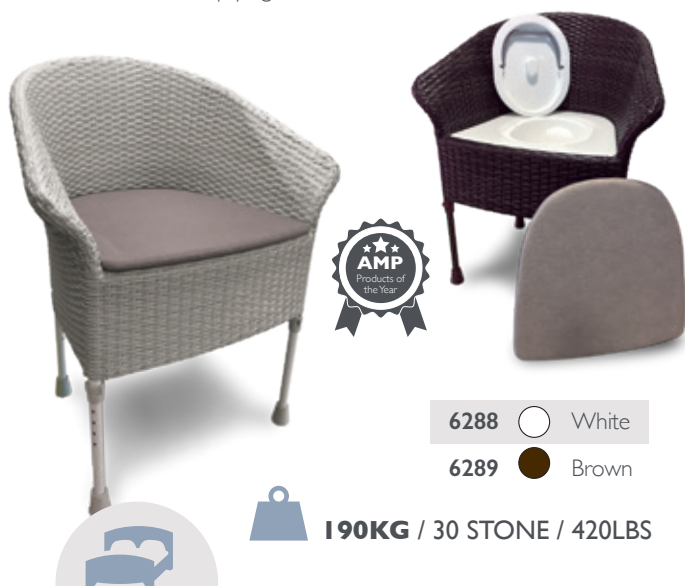
**The Walton Adjustable Commode sets a new standard for commode chairs.**

For the first time, there is now a furniture commode which has height adjustable legs, so you can set it to the ideal height for you. It also features an arm rest on each side, to give you support when rising from the chair.

The premium aluminium and plastic construction is hygienic and extremely easy to clean, with a choice of two new weave designs to blend in perfectly with your other household furniture.

The commode area is also completely concealed, to give you our most discreet design. The commode area includes our fully sealed removable cassette unit, which can be removed for cleaning, or to convert the chair back to an ordinary chair if a commode is no longer needed.

It holds the high capacity 7 litre Burton Pan, with our easy 'Lock and Lift' lid to prevent spills, as well as an additional handle on the back to make emptying it much more comfortable.



6288  White

6289  Brown



**190KG / 30 STONE / 420LBS**

# ROYALE FLUSHING COMMODE

DISCREET AND HYGIENIC.



## KEY FEATURES

- Innovative design
- Attractive and comfortable
- Hygienic and easy to empty

This design brings all the benefits of a stylish and comfortable Royale Commode with the convenience of a hygienic flushing toilet. It can be used multiple times before the tank has to be emptied, making life easier for the user or their carer.

It comprises of two detachable sections, the upper section is a combined flush water tank and toilet bowl, with a removable toilet seat and lid, while the lower section is a sealed waste tank.

A pump handle activates the flushing system, and washes the waste down to the sealed holding tank, where chemicals break it down and destroy any odours.

The holding tank slides out of the commode base to allow quick disposal and easy cleaning.

**55001/BR**

Royale Flushing Commode



**190KG / 30 STONE / 420LBS**



# DERBY BASKETWEAVE COMMUNE

TRADITIONAL LLOYD LOOM  
WOODEN FRAMED COMMUNE.



## KEY FEATURES

- Attractive basketweave design
- Concealed commune pan
- High sides offer extra support
- Ashby commune pan with Lock and Lift Lid

The Derby Basketweave Commune is hand crafted from beech wood, with an attractive white and gold weave. It features a hidden self-locking Ashby commune pan with non spill handle, concealed completely from view by the comfortable seat cushion.

The high sides of the chair give support for the hand and forearm when rising from the chair, along with discreet privacy for the user.

5504/OA

Derby Basketweave Commune



**160KG / 25 STONE / 350LBS**

# DERBY DELUXE COMMUNE

COMPACT, STRONG AND SOLID.



## KEY FEATURES

- Solid hardwood frame
- Stylish moquette upholstery
- Ideal for smaller rooms
- Fully removable cassette
- Ashby commune pan with Lock and Lift Lid

This commune has a strong polished hardwood frame, crafted from solid ash wood. It has a comfortable padded seat and backrest providing excellent support. A removable cassette, holding the Ashby commune pan underneath the seat cushion, can be cleaned away from the bedroom, or removed permanently to convert into an ordinary chair.

Available in a choice of three moquette fabrics or vinyl upholstery.

55100/BR



Brown Deluxe Commune

55100/CN



Navy Deluxe Commune

55100/FB



Flowerbasket Deluxe Commune



**190KG / 30 STONE / 420LBS**



# ROYALE COMMODE

HIGH QUALITY TRADITIONAL  
DESIGN.








## KEY FEATURES

- Traditional hard wood design
- Commode pan hidden from view
- Solid arms to support user when standing
- Fully removable cassette
- Ashby commode pan with Lock and Lift Lid

The sturdy construction of the Royale Commode gives the user support and confidence when using the chair. The comfortable, easy to clean and fire resistant upholstered seat is hinged and when pushed back, reveals the hidden commode. The seat, cassette and commode pan are easy to remove and replace and the chair can be a functional piece of daily furniture if the cassette is permanently removed.

**Available fully assembled or as flatpack option.**

					
<b>Standard</b>	5505/A	55059/BR	55059/BL	55059/GR	
<b>Flat pack</b>	5505/F	55059/BR/F	55059/BL/F	55059/GR/F	



**160KG / 25 STONE / 350LBS**

# ROYALE EXTRA WIDE COMMODE

EXTRA WIDTH FOR ADDITIONAL  
COMFORT.








## KEY FEATURES

- Designed to blend into any home setting
- Sturdy solid wood construction
- Commode pan hidden from view
- Additional width provides extra comfort
- Fully removable cassette
- Ashby commode pan with Lock and Lift Lid

The Royale Extra Wide Commode is 3 inches wider than its sister model, providing additional comfort for the user. The comfortable upholstered seat is not hinged and can be lifted off to reveal the hidden commode. Like the standard Royale, it features a fully removable cassette and can be used as a comfortable piece of daily furniture if the cassette is permanently removed.

**Available fully assembled or as flatpack option.**

					
<b>Extra Wide</b>	5501	55019/BR	55019/BL	55019/GR	
<b>Flat pack</b>	5501/F				



**160KG / 25 STONE / 350LBS**



# DEVON COMMODE

COMPACT, ERGONOMIC  
COMMODE.



## KEY FEATURES

- Space saving design
- Easy-clean vinyl
- Available as flat pack option
- Ashby commode pan with Lock and Lift Lid

The Devon Commode gives the best possible hygiene and comfort, in a compact space-saving design. The tough hygienic plastic construction features a sealed vinyl cushion and plastic seating area making it easy to clean. It has sturdy arms and back which provide a high level of structural rigidity, helping to support the user:

**55071/OA**

Devon Commode

**55071/OA/F**

Devon Commode Flat Pack Option



**160KG / 25 STONE / 350LBS**

# ASHBY COMMODE

HEIGHT ADJUSTABLE COMMODE  
STOOL OR CHAIR.

## KEY FEATURES

- Compact chair or stool
- Height adjustable legs for more comfort
- Fits neatly alongside a bed
- Ashby commode pan with Lock and Lift Lid

Its compact size and height adjustability make this commode ideal for bedside use. The chair features a smooth curved backrest and arms which give support to the user; and improved accessibility. The soft padded cushion, upholstered in washable vinyl conceals the built in commode pan, while the all-plastic construction of the optional back rest make it easy to thoroughly clean.

**6247/OA**

Ashby Commode Stool

**6248/OA**

Ashby Commode Chair



**ASHBY**

COMMODE STOOL



**ASHBY**

COMMODE CHAIR



**160KG / 25 STONE / 350LBS**



# DERBY CORNER COMMODE

SPACE SAVING COMMODE.

## KEY FEATURES

- Extra wide 65 cm opening between the arms
- Best for side transfers
- Large seating area
- Ashby commode pan with Lock and Lift Lid

The unique corner shape of the Derby Corner Commode provides access from the front, or either side, making side transfers easier.

The wide 65cm opening between the arms provides unrestricted access, and the innovative corner design combined with the contoured seating area make this a comfortable choice for any user. The robust construction and sturdy legs give a high level of stability.

Under the seat cushion is a three position cassette holding the commode pan. It can be securely positioned to the left, right or centre, meaning that the chair can be conveniently positioned in the corner of a room, or directly alongside a bed.

The sturdy frame is constructed from polished hardwood, combined with a plastic seat body and backrest. The commode cassette is concealed under a comfortable padded vinyl upholstered seat cushion.

**Available in two different sizes, with a seat height of either 49 cm or 54 cm.**



Colours available:  
Brown with brown seat cushion  
Grey with blue seat cushion



Three commode pan positions

**55085/BR**



Regular Derby Corner Commode, brown

**55085/GYBL**



Regular Derby Corner Commode, grey with blue seat

**55087/BR**



Tall Derby Corner Commode, brown

**55087/GYBL**



Tall Derby Corner Commode, grey with blue seat



**254KG / 40 STONE / 560LBS**



# DIGNITY COMMODE

PORTABLE WASH AND DRY BIDET.

APPROVED BY THE NHS DEVICES FOR DIGNITY TEAM.

## KEY FEATURES

- No installation required
- Reduces the need for a carer
- Promotes independence and restores dignity

The Dignity Commode reduces the need for a carer, restoring dignity and independence by allowing people to clean themselves after toileting. The commode warms the water to a comfortable temperature (adjustable by the user) and has a controlled water spray for personal cleaning and a warm air blower to dry afterwards. Waste collects in the commode pan for easy disposal and is easy to clean as it is made from hygienic white plastic and plastic coated steel. The electronic bidet toilet then unclips from the main body so that the commode base can be cleaned separately. Easy installation allows the commode to simply plug into a standard power socket and has a small water tank on the side for refilling. It is portable and can be locked in place for stability.

## FEATURES FOR ADDITIONAL COMFORT

- Wall mountable remote control with large clear buttons
- Controllable heated seat and water
- Adjustable water pressure and spray arm, giving a comfortable bidet wash
- Small light under seat for use at night
- Height adjustable frame



## DEVELOPED WITH THE NHS

The Dignity Commode has received praise from the NICE, the National Institute for Health and Clinical Excellence, who said it "could have tremendous impact on the quality of care provided for patients who have suffered a stroke or patients with incontinence". The design has been refined and approved by the NHS Devices for Dignity team.

**62425** Dignity Commode



**190KG / 30 STONE / 420LBS**



# TIMBERRY KURVE COMMODE

STYLISH CONTEMPORARY DESIGN.

## KEY FEATURES

- Contemporary design
- Easy to clean
- Comfortably sized seating area
- Choice of upholstery colours
- Ashby commode pan with Lock and Lift Lid

The new Timberrry Kurve Commode offers the best of British manufacturing, produced in the UK by our skilled crafts team.

It has been designed to look great in your home as a piece of contemporary everyday furniture. The modern curves of the smooth plastic seat body are easy to clean and the elegant splayed hardwood legs provide a stable base.

The generous sized seat makes this a comfortable choice and ensures that the commode pan is fully concealed from view.

**The padded seat cushion is available in a choice of fabrics to suit your decor.**



- |       |   |       |
|-------|---|-------|
| 56551 | ● | Grey  |
| 56552 | ● | Blue  |
| 56553 | ● | Beige |
| 56554 | ● | Green |



**190KG / 30 STONE / 420LBS**





# TIMBERRY SCANDI COMMODE

SCANDINAVIAN INSPIRED STYLING.

## KEY FEATURES

- Clean lines and gentle curves
- Commode pan hidden from view
- Choice of upholstery colours
- Fully removable cassette
- Removable cassette and Ashby commode pan with Lock and Lift Lid



Sleek and elegant, the Timberry Scandi Commode is a thoughtfully designed piece of furniture. The simple clean lines give an uncluttered appearance and the padded backrest and solid arms give the user support and stability.

The upholstered seat cushion is hinged and when pushed back reveals the fully concealed commode. The commode pan sits in a removable cassette, providing double protection against spills. The commode cassette can be taken out for cleaning, or removed permanently to convert to an ordinary chair.

**Available in an Ash, Walnut or a Whitewash finish and with a choice of fabric colours to suit your decor.**



55211  Ash/Grey  
55212  Ash/Blue  
55213  Ash/Beige  
55214  Ash/Green

55311  Walnut/Grey  
55312  Walnut/Blue  
55313  Walnut/Beige  
55314  Walnut/Green

55411  Whitewash/Grey  
55412  Whitewash/Blue  
55413  Whitewash/Beige  
55415  Whitewash/Green

Petite option  
now available  
which is 4 cm  
shorter

(please note colour variations may occur in natural timber)



**160KG / 25 STONE / 350LBS**



# BAMBERRY TRANSFER BOARDS

SAFER INDEPENDENT OR ASSISTED TRANSFERS.



## KEY FEATURES

- Attractive and strong bamboo design
- Ideal for people with limited mobility or strength
- Curved design available with handle

Ideal for people with limited mobility or strength, these smooth high gloss boards make it easier to move from a wheelchair to a car, bed or chair. They are suitable for assisted or unassisted transfers and the curved design features four slip-resistant pads for extra grip. They are water resistant, easy to clean and have rounded edges and corners for extra comfort.

Made from bamboo which has natural antibacterial properties and finished in a natural colour.

The curved design has been specifically designed to fit around the arm of a wheelchair, and both the curved and 30 inch (76 cm) boards feature a handle for transport.



<b>55933</b>	24 inch (60 cm)
<b>55932</b>	30 inch (76 cm)
<b>55935</b>	Curved



**190KG / 30 STONE / 420LBS**



# BAMBERRY STEP



ATTRACTIVE STEP FOR ACCESS ANYWHERE IN THE HOME.



## KEY FEATURES

- Ideal for use throughout your home
- Attractive design and high quality finish

The Bamberry step is a useful aid anywhere that a little extra height is needed. Made from high quality bamboo, its stylish design blends in well in any room of the home. The Bamberry Step is 4 inches (10 cm) high with smooth, rounded edges and stands on slip resistant pads.

55920

Bamberry Step



**318KG** / 50 STONE / 700LBS







# GOOD GOOD FOR KIDS

SIMPLE ADJUSTMENTS CAN MAKE A  
BIG DIFFERENCE TO CHILDREN AT  
HOME AND AT SCHOOL.

SureGrip raisers give wheelchair access to desks  
and tables, steps can help improve classroom  
concentration by providing sensory feedback, and  
improved positioning for fine motor skills.





See page **8**

## LANGHAM SUREGRIP

Langham Suregrip furniture raisers are really versatile and have been designed to make raising furniture as simple as possible. They are ideal for raising desks and tables, for example to improve the height of a desk for wheelchair access.

The unique double grip holds the furniture leg firmly in place, and the height can be easily adjusted in seconds by simply twisting the unit up and down.

## NOBI FAMILY TOILET SEAT

Ideal for a family bathroom and designed to be easy for the whole family to use. The Nobi Family Toilet Seat includes integrated arms and both an adult sized seat and a removable child seat with a smaller aperture.

See page **28**



See page **31**

## K40 ADJUSTABLE STEP

A lightweight easily adjustable step, perfect for little legs! The modular sections mean that the step can easily be made higher or lower as you grow.

The stable step platform is ideal for use under desks or tables as a foot support to provide better posture.



See page **33**

## PRIMA BATHROOM STEP

Not just for the bathroom! The modular design of the Prima Bathroom Step means that it can be adapted to just the right height. The large step area and textured surface are perfect for fidgety feet and provide sensory feedback.



## CEREBRA SLEDGE

A beautiful high quality wooden sledge for children with disabilities. Includes a seat on the back for parents or siblings to join in.

See page **58**



# TECHNICAL INFORMATION

## FURNITURE RAISERS

LANGHAM SUREGRIP		
<b>Raiser Unit Dimensions (LxWxH)</b>	130 x 130 x 102 - 165 mm	
	5.1 x 5.1 x 4 - 6.5 inch	
<b>Overall Linked Length</b>	675 - 1051 mm	
	26.5 - 41.3 inch	
<b>Overall Linked Length (with Spreader Bar)</b>	1088 - 1452 mm	
	42.8 - 57.1 inch	
<b>Furniture Raise Height</b>	<b>Legs up to 70 mm (2.75inch)</b> - in the aperture	43 - 106 mm
		1.7 - 4.2 inch
	<b>Castors</b> - in the aperture	76 - 140 mm
		3 - 5.5 inch
	<b>Block Feet or Solid Bases</b> - on the block adaptor	101 - 165 mm
		4 - 6.5 inch

LANGHAM MULTI-PURPOSE RAISER		
<b>Raiser Unit Dimensions (LxWxH)</b>	200 x 210 x 125 - 205 mm	
	7.8 x 8.2 x 4.9 - 8 inch	
<b>Overall Linked Length</b>	910 - 1123 mm	
	35.8 - 44.2 inch	
<b>Overall Linked Length (with Spreader Bar)</b>	1421 - 1730 mm	
	55.9 - 68.1 inch	
<b>Aperture Size</b>	150 x 90 mm	
	5.9 x 3.5 inch	
<b>Furniture Raise Height</b>	<b>Legs</b> - in the aperture	50 - 130 mm
		2-5 inch
	<b>Castors</b> - in the aperture	75 - 155 mm
		3 - 6 inch
	<b>Divan Bases</b> - on the top of the unit	105 - 185 mm
		4 - 7 inch

ADJUSTABLE CHAIR RAISER (JLP)	
<b>Raiser Unit Dimensions (LxWxH)</b>	126 x 110 x 146
	4.9 x 4.3 x 5.7 inch
<b>Aperture Size</b>	64 x 83 mm
	2.5 x 3.2 inch
<b>Maximum Leg Size</b>	64 x 76 mm
	2.5 x 3 inch
<b>Maximum Chair Footprint</b>	790 x 690 mm
	31.1 x 27.1 inch
<b>Raise Heights</b>	50, 75, 100 mm
	2, 3, 4 inch

ADJUSTABLE BED RAISER (NLP)	
<b>Raiser Unit Dimensions (LxWxH)</b>	128 x 192 x 154 mm
	5 x 7.5 x 6 inch
<b>Aperture Size</b>	64 x 83 mm
	2.5 x 3.2 inch
<b>Maximum Leg Size</b>	64 x 76 mm
	2.5 x 3 inch
<b>NLP 129 Length</b>	914 x 1460 mm
	36 x 57.5 inch
<b>NLP 129S Length</b>	610 x 890 mm
	24 x 35 inch
<b>Raise Heights</b>	64, 88, 113 mm
	2.5, 3.5, 4.5 inch



GRIP ON RAISERS		
LP/K100	Overall Dimensions (LxWxH)	94 x 108 x 118 mm
		3.7 x 4.3 x 4.6 inch
	Maximum Leg/Castor Diameter	30 mm
		1.2 inch
LP/K200	Raise Height	25, 50, 75 mm
		1, 2, 3 inch
	Overall Dimensions (LxWxH)	106 x 121 x 118 mm
		4.2 x 4.8 x 4.6 inch
LP/K300	Maximum Leg/Castor Diameter	43 mm
		1.7 inch
	Raise Height	25, 50, 75 mm
		1, 2, 3 inch
LP/K300	Overall Dimensions (LxWxH)	132 x 152 x 118 mm
		5.2 x 6 x 4.6 inch
	Maximum Leg/Castor Diameter	56 mm
		2.2 inch
LP/K300	Raise Height	25, 50, 75 mm
		1, 2, 3 inch

ELEPHANT FEET RAISERS		
"9cm"	Overall Dimensions (LxWxH)	158 x 158 x 100 mm
		6.2 x 6.2 x 3.9 inch
	Maximum Leg/Castor Diameter	89 mm
		3.5 inch
"14cm"	Raise Height	90 mm
		3.5 inch
	Overall Dimensions (LxWxH)	158 x 158 x 150 mm
		6.2 x 6.2 x 5.9 inch
"14cm"	Maximum Leg/Castor Diameter	89 mm
		3.5 inch
	Raise Height	140 mm
		5.5 inch

BAMBERRY CUBES		
"9cm"	Overall Dimensions (LxWxH)	93 x 93 x 93 mm
		3.6 x 3.6 x 3.6 inch
	Recess Diameters	32, 51, 76 mm
		1.2, 2, 3 inch
"14cm"	Recess Depth	16 mm
		0.6 inch
	Raise Height	77 mm
		3 inch
"14cm"	Overall Dimensions (LxWxH)	146 x 146 x 155 mm
		5.7 x 5.7 x 6.1 inch
	Recess Diameters	76 mm
		3 inch
"14cm"	Recess Depth	22 mm
		0.8 inch
	Raise Height	133 mm
		5.2 inch

SILVA RAISERS		
"7.5cm"	Overall Dimensions (LxWxH)	45 x 45 x 75 mm
		1.8 x 1.8 x 3 inch
	Raise Height	75 mm
		3 inch
"10cm"	Overall Dimensions (LxWxH)	45 x 45 x 100 mm
		1.8 x 1.8 x 3.9 inch
	Raise Height	100 mm
		4 inch

LEG-X		
Overall Dimensions (LxWxH)	3.3 x 3.3 x 8 inch	85 x 85 x 205 mm
Raise Height	3 - 5 inch	75 - 125 mm

## BATHROOM

### ASHBY LIFT TOILET RAISERS

<b>Overall Dimensions (L x W x H)</b>	464 x 355 x 75 mm	Oval Straight
	464 x 350 x 75 mm	
<b>Aperture Size (L x W)</b>	18.3 x 14 x 3 inch	Oval Straight
	18.3 x 13.8 x 3 inch	
<b>Aperture Size (L x W)</b>	310 x 255 mm	Oval Straight
	290 x 250 mm	
<b>Space between Fixings</b>	12.2 x 10 inch	Oval Straight
	11.4 x 9.8 inch	
<b>Space between Fixings</b>	130 - 165 mm	
	5.1 - 6.5 inch	

### SERENITY RAISED TOILET SEAT

<b>Overall Dimensions (LxWxH)</b>	405 x 380 x 50 / 100 / 150 mm
	15.9 x 15 x 2 / 4 / 6 inch
<b>Aperture size (LxW)</b>	259 x 211 mm
	10.2 x 8.3 inch

### PRIMA RAISED TOILET SEAT

<b>Overall Dimensions (LxWxH)</b>	400 x 380 x 50 / 100 mm
	15.7 x 15 x 2 / 4 inch
<b>Aperture size (LxW)</b>	250 x 210 mm
	9.8 x 8.3 inch

### PRIMA LIFT TOILET RAISER

<b>Overall Dimensions (LxWxH)</b>	425 x 355 x 50 mm
	16.7 x 14 x 2 inch
<b>Aperture size (LxW)</b>	351 x 265 mm
	13.8 x 10.4 inch
<b>Hole Space Between Fixings</b>	155 mm
	6.1 inch

### DERBY RAISED TOILET SEAT

<b>Overall Dimensions (LxWxH)</b>	400 x 380 x 50 / 100 mm
	15.7 x 15 x 2 / 4 inch
<b>Aperture size (LxW)</b>	260 x 215 mm
	10.2 x 8.5 inch

### ASHBY RAISED TOILET SEAT

<b>Overall Dimensions (LxWxH)</b>	390 x 375 x 50 / 100 / 150 mm
	15.4 x 14.8 x 2 / 4 / 6 inch
<b>Aperture size (LxW)</b>	250 x 210 mm
	9.8 x 8.3 inch

### ASHBY WIDE ACCESS

<b>Overall Dimensions (LxWxH)</b>	410 x 420 x 100 mm
	16.1 x 16.5 x 4 inch
<b>Aperture size (LxW)</b>	210 x 250 mm
	8.3 x 9.8 inch

### ASHBY SLOPED RAISED TOILET SEATS

<b>Overall Dimensions (L x W x H)</b>	404 x 384 x 145 mm
	15.9 x 15.1 x 5.7 inch
<b>Aperture Size (L x W)</b>	262 x 211 mm
	10.3 x 8.3 inch

### ENTERPRISE TOILET SEAT WITH ARMS

<b>Overall Dimensions (LxWxH)</b>	500 x 500 x 330 mm
	19.7 x 19.7 x 13 inch
<b>Seat Dimensions (LxWxH)</b>	380 x 500 x 100 mm
	15 x 19.7 x 4 inch
<b>Aperture size (LxW)</b>	250 x 210 mm
	9.8 x 8.3 inch
<b>Width Between Arms</b>	435 mm
	17.1 inch

### NOBI TOILET SEAT WITH ARMS

<b>Overall Dimensions (LxWxH)</b>	430 x 620 x 150 mm
	17 x 24.4 x 5.9 inch
<b>Seat Dimensions (LxWxH)</b>	430 x 350 x 100 mm
	17 x 13.8 x 4 inch
<b>Aperture size on Classic (LxW)</b>	280 x 210 mm
	11 x 8.3 inch
<b>Aperture size on Family (LxW)</b>	175 x 155 mm
	6.9 x 6.1 inch
<b>Width Between Arms</b>	445 mm
	17.5 inch

### DERBY P-GUARD

<b>Overall Dimensions of Cup (LxWxH)</b>	125 x 50 x 168 mm
	4.9 x 2 x 6.6 inch

## BATHROOM - TOILET AIDS

PRIMA MULTI-FRAME	
Overall Dimensions (LxWxH)	460 x 580 - 660 x 690 - 840 mm
	18.1 x 22.8 - 26 x 27.2 - 33.1 inch
Width Between Arms	518, 558, 598 mm
	20.4, 22, 23.5 inch
Toilet Seat Dimensions (LxW)	460 x 600 mm
	18.1 x 23.6 inch
Toilet Seat Aperture size (LxW)	250 x 200 mm
	9.8x 7.9 inch

PRIMA UNIVERSAL TOILET ARMS	
Width Between Arms Centre to Centre	540 mm 21.3 inch
Width Between Arms	490 mm 19.3 inch
Overall Width – Support Bracket In	636 mm 25 inch
Overall Width – Support Bracket Out	715 mm 28.1 inch
Width Between Support Brackets	280 - 370 mm 11 - 14.6 inch
Arm Height Above Pan	245, 270, 295 mm 9.6, 10.6, 11.6 inch
Space Between Plate Fixings	125 - 170 mm 4.9 - 6.7 inch

PRIMA TOILET AID - CLASSIC / SUPERIOR / FLAT PACK(FP)	
Overall Dimensions (LxWxH)	489 x 532 x 614 - 815 mm
	489 x 572 x 614 - 815 mm (FP)
	489 x 572 - 672 x 614 - 815 mm (VA)
	19.3 x 21 x 24.2 - 32.1 inch 19.3 x 22.5 x 24.2 - 32.1 inch (FP) 19.3 x 22.5 - 26.5 x 24.2 - 32.1 inch (VA)
Width Between Arms	488 mm    528 mm (FP)
	19.2 inch    20.8 inch (FP)
	528 - 628 mm (VA)
	20.8 - 24.7 inch (VA)
Toilet Seat Dimensions (LxWxH)	453 x 425 x 410 - 610 mm
	17.8 x 16.7 x 16.1 - 24 inch
Toilet Seat Aperture size (LxW)	281 x 205 mm
	11.1 x 8.1 inch

PRIMA GENTLEMAN'S HORSESHOE TOILET AID / FLAT PACK (FP)	
Overall Dimensions (LxWxH)	489 x 532 x 614 - 815 mm
	489 x 572 x 614 - 815 mm (FP)
Width Between Arms	19.3 x 21 x 24.2 - 32.1 inch 19.3 x 22.5 x 24.2 - 32.1 inch (FP)
	488 mm    528 mm (FP)
Toilet Seat Dimensions (LxWxH)	19.2 inch    20.8 inch (FP)
	434 x 424 x 402 - 603 mm
Toilet Seat Aperture size (LxW)	17.1 x 16.7 x 15.8 - 23.7 inch
	345 x 202 mm - with open front 13.6 x 8 inch - with open front

## BATHROOM - STEPS

BAMERRY STEP	
Overall Dimensions (LxWxH)	354 x 454 x 100 mm
	13.9 x 17.9 x 4 inch

ASHBY STEP TWO	
Overall Dimensions (LxWxH)	350 x 530 x 100 / 150 mm
	13.8 x 20.9 x 4 / 6 inch

LANGHAM ADJUSTABLE PLATFORM BATH STEP (K40)	
Overall Dimensions (LxWxH)	350 x 450 x 25 - 200 mm
	13.8 x 17.7 x 1 - 8 inch

PRIMA BATHROOM STEP	
Overall Dimensions (LxWxH)	356 x 450 x 50 - 300 mm
	14 x 17.7 x 2 - 11.8 inch

PRIMA HOME STEP	
Overall Dimensions (LxWxH)	332 x 520 x 825 - 978 mm
	13.1 x 20.5 x 32.5 - 38.5 inch
Step Dimensions (LxWxH)	291 x 497 x 137 mm
	11.5 x 19.5 x 5.4 inch

## BATHROOM - GRAB BARS

PRIMA GRAB BARS		
<b>Handle Width x Depth</b>	37 x 31 mm	
	1.5 x 1.2 inch	
<b>Distance from wall to handle</b>	37 mm	
	1.5 inch	
Angled 13"	<b>Overall Dimensions (LxWxH)</b>	329 x 190 x 68.5 mm
		13 x 7.5 x 2.7 inch
	<b>Handle Legnth</b>	214 mm
		8.4 inch
Angled 16"	<b>Overall Dimensions (LxWxH)</b>	457 x 250 x 68.5
		18 x 9.8 x 2.7 inch
	<b>Handle Legnth</b>	370 mm
		14.6 inch
Straight 12"	<b>Overall Dimensions (LxWxH)</b>	342 x 65 x 68.5 mm
		13.5 x 2.6 x 2.7 inch
	<b>Handle Legnth</b>	177 mm
		7 inch
Straight 16"	<b>Overall Dimensions (LxWxH)</b>	449 x 65 x 68.5 mm
		17.7 x 2.6 x 2.7 inch
	<b>Handle Legnth</b>	284 mm
		11.2 inch
Straight 18"	<b>Overall Dimensions (LxWxH)</b>	492 x 65 x 68.5 mm
		19.4 x 2.6 x 2.7 inch
	<b>Handle Legnth</b>	327 mm
		12.9 inch
Straight 24"	<b>Overall Dimensions (LxWxH)</b>	642 x 65 x 68.5 mm
		25.3 x 2.6 x 2.7 inch
	<b>Handle Legnth</b>	477 mm
		18.8 inch

## BATHROOM - GRAB BARS

ASHBY GRAB BARS		
<b>Handle Width x Depth</b>	45 x 25 mm (Straight); 40 x 25 mm (Angled)	
	1.8 x 1 inch	
<b>Distance from wall to handle</b>	50 mm	
	2 inch	
Angled	<b>Overall Dimensions (LxWxH)</b>	330 x 130 x 75 mm
		13 x 5.1 x 3 inch
	<b>Handle Legnth</b>	303 mm
		11.9 inch
Straight 12"	<b>Overall Dimensions (LxWxH)</b>	345 x 95 x 75 mm
		13.6 x 3.7 x 3 inch
	<b>Handle Legnth</b>	265 mm
		10.4 inch
Straight 18"	<b>Overall Dimensions (LxWxH)</b>	500 x 95 x 75 mm
		19.7 x 3.7 x 3 inch
	<b>Handle Legnth</b>	415 mm
		16.3 inch
Straight 24"	<b>Overall Dimensions (LxWxH)</b>	630 x 95 x 75 mm
		24.8 x 3.7 x 3 inch
	<b>Handle Legnth</b>	560 mm
		22 inch

PRIMA PIVOT GRAB BARS	
<b>Aluminium Handle Width x Depth</b>	35 x 30 mm
	1.4 x 1.2 inch
<b>Distance From Wall to Handle</b>	38 mm
	1.5 inch
<b>Available Bar Sizes</b>	200 / 400 / 600 mm
	7.8 / 15.7 / 23.6 inch
<b>Overall Dimensions (LxWxH)</b>	Overall L x W is dependant on bar configuration and handle. Overall height = 78 mm / 3.1 inch. End and middle assembly diameter = 90 mm / 3.5 inch.



## SHOWER KIT

ASHBY SHOWER KIT	
Overall Dimensions (LxWxH)	770 x 470 x 75 mm
	30.3 x 18.5 x 3 inch

## BATH BOARD

COSBY BATH BOARD	
Overall Dimensions (LxWxH)	710 x 285 x 95 mm
	28 x 11.2 x 3.7 inch
Leg Adjustability Range	480 - 700 mm
	18.9 - 27.5 inch

DERBY BATH BOARD	
Overall Dimensions (LxWxH)	710 x 305 x 152 mm
	28 x 12 x 6 inch
Leg Adjustability Range	440 - 630 mm
	17.3 - 24.8 inch

## BATH SEATS

COSBY BATH SEAT	
Overall Dimensions (LxWxH)	381 x 460 x 200 mm
	15 x 18.1 x 7.9 inch
Seat Dimensions (LxW)	280 x 460 mm
	11 x 18.1 inch

DERBY BATH SEAT	
Overall Dimensions (LxWxH)	280 x 400 x 150 / 200 mm
	11 x 15.7 x 5.9 / 7.9 inch
Seat Dimensions (LxW)	200 x 400 mm
	7.9 x 15.7 inch
Leg Adjustability	320 - 440 mm
	12.6 x 17.3 inch

## BATHING AIDS

ASHBY BATH SHORTENER	
Overall Dimensions (LxWxH)	305 x 368 x 355 mm
	12 x 14.5 x 14 inch

DERBY TAP TURNERS	
Overall Dimension - Single Turner (LxWxH)	179 x 70 x 49 mm
	7 x 2.8 x 1.9 inch
Handle Length	91 mm
	3.6 inch
Cross Head (Capstan) Tap Diameters	Min = 40 mm; Max=60 mm
	Min = 1.6 inch; Max=2.4 inch
Crystal Tap Diameters	Min = 48 mm; Max=60 mm
	Min = 1.9 inch; Max=2.4 inch

PRIMA SUCTION FEET	
Base Diameter	86 mm
	3.3 inch
Height Added to Used On Frame	44 mm
	1.7 inch

PRIMA MODULAR 3 IN 1 SHOWER CHAIR	
Seat Height	416 - 564 mm
	16.4 - 22.2 inch
Arm Rest Height	575 - 722 mm
	22.6 - 28.4 inch
Total Height	696 - 844 mm
	27.4 - 33.2 inch
Total Width	526 mm
	20.7 inch
Width Between Arms	434 mm
	17.1 inch
Footprint (LxW)	Min = 421 x 392 mm; Max = 474 x 444 mm
	Min = 16.6 x 15.4 inch; Max = 18.7 x 17.5 inch
Seat Size (LxW)	320 x 402 mm
	12.6 x 15.8 inch

## DEMENTIA CARE AND HIGH CONTRAST PRODUCTS

RED AND BLUE ASHBY GRAB BARS		
Handle Width x Depth	45 x 25 mm (Straight); 40 x 25 mm (Angled)	
	1.8 x 1 inch	
Distance from wall to handle	50 mm	
	2 inch	
Angled	Overall Dimensions (LxWxH)	330 x 130 x 75 mm
		13 x 5.1 x 3 inch
	Handle Legnth	303 mm
		11.9 inch
Straight 12"	Overall Dimensions (LxWxH)	345 x 95 x 75 mm
		13.6 x 3.7 x 3 inch
	Handle Legnth	265 mm
		10.4 inch
Straight 18"	Overall Dimensions (LxWxH)	500 x 95 x 75 mm
		19.7 x 3.7 x 3 inch
	Handle Legnth	415 mm
		16.3 inch
Straight 24"	Overall Dimensions (LxWxH)	630 x 95 x 75 mm
		24.8 x 3.7 x 3 inch
	Handle Legnth	560 mm
		22 inch

RED AND BLUE ASHBY RAISED TOILET SEAT		
Overall Dimensions (LxWxH)	390 x 375 x 50 / 100 / 150 mm	
	15.4 x 14.8 x 2 / 3.9 / 5.9 inch	
Aperture size (LxW)	250 x 210 mm	
	9.8 x 8.3 inch	

RED AND BLUE ASHBY STEP TWO		
Overall Dimensions (LxWxH)	350 x 530 x 100 / 150 mm	
	13.8 x 20.9 x 3.9 / 5.9 inch	

RED AND BLUE SUPERIOR TOILET AID		
Overall Dimensions (LxWxH)	489 x 532 x 614 - 815 mm	
	19.3 x 21 x 24.2-32.1 inch	
Width Between Arms	488 mm	
	19.2 inch	
Toilet Seat Dimensions (LxWxH)	453 x 425 x 410 - 610 mm	
	17.8 x 16.7 x 16.1-24 inch	
Toilet Seat Aperture size (LxW)	281 x 205 mm	
	11.1 x 8.1 inch	

## BARIATRIC CARE PRODUCTS

BIG JOHN COMMODE AND TOILET AID		
Overall Dimensions (LxWxH)	545 x 729 x 625 - 772 mm	
	21.5 x 28.7 x 24.6 - 30.1 inch	
Seat Height	385 - 532 mm	
	15.2 x 20.9 inch	
Width Between Armrests	620 mm	
	24.4 inch	

DERBY CORNER COMMODE		
REGULAR	Overall Dimensions (LxWxH)	620 x 665 x 825 mm
		24.4 x 26.2 x 32.5 inch
	Seat Dimensions (LxWxH)	520 x 560 x 490 mm
		20.5 x 22 x 19.3 inch
	Width Between Arms	650 mm
		25.6 inch
TALL	Overall Dimensions (LxWxH)	620 x 665 x 875 mm
		16.5 x 19.7 x 34.4 inch
	Seat Dimensions (LxWxH)	520 x 560 x 540 mm
		20.5 x 22 x 21.3 inch
	Width Between Arms	650 mm
		25.6 inch
	Armrest Height	730 mm
		28.7 inch

BIG JOHN TOILET SEAT		
Overall Dimensions (LxWxH)	490 x 490 x 47 mm	
	19.3 x 19.3 x 1.9 inch	
Seat Height	38 mm	
	1.5 inch	
Aperture size (LxW)	290 x 220 mm	
	11.4 x 8.7 inch	
Hole Space Between Fixings	155 mm	
	6.1 inch	

COSBY HEAVY DUTY BATH BOARD		
Overall Dimensions (LxWxH)	710 x 285 x 95 mm	
	28 x 11.2 x 3.7 inch	
Leg Adjustability Range	480 - 700 mm	
	18.9 - 27.5 inch	

## KITCHEN CARE PRODUCTS

PRIMA MODULAR 3 IN 1 PERCHING CHAIR	
Seat Height (Front)	480 - 630 mm
	18.9 - 24.8 inch
Arm Rest Height	662 - 810 mm
	26.1 - 31.9 inch
Total Height	797 - 945 mm
	31.4 - 37.2 inch
Total Width	526 mm
	20.7 inch
Width Between Arms	434 mm
	17.1 inch
Footprint (LxW)	Min = 453 x 434 mm; Max = 506 x 488 mm
	Min = 17.8 x 17.1 inch; Max = 19.9 x 19.2 inch
Seat Size (LxW)	308 x 402 mm
	12.1 x 15.8 inch
Seat Angle	8 degrees

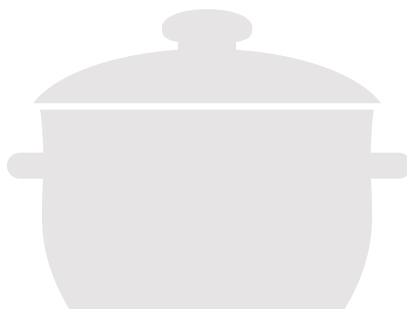
PRIMA HOME STEP	
Overall Dimensions (LxWxH)	332 x 520 x 825 - 978 mm
	13.1 x 20.5 x 32.5 - 38.5 inch
Step Dimensions (LxWxH)	291 x 497 x 137 mm
	11.5 x 19.5 x 5.4 inch

DERBY SPILL NOT	
Overall Dimensions (LxWxH)	208 x 148 x 73 mm
	8.2 x 5.8 x 2.9 inch
Cup Diameters	50 / 75 / 112 mm
	2 / 3 / 4.4 inch

DERBY PREPARATION BOARD	
Tipper - Overall Dimensions (LxWxH)	222 x 222 x 38 mm
	8.7 x 8.7 x 1.5 inch

DERBY TIPPER	
Tipper - Overall Dimensions (LxWxH)	248 x 205 x 191 mm
	9.8 x 8.1 x 7.5 inch
Base - Overall Dimensions (LxWxH)	580 x 210 x 9 mm
	22.8 x 8.3 x 0.4 inch

DERWENT TROLLEY		
STANDARD	Overall Dimensions (LxWxH)	550 x 400 x 960 mm
		21.7 x 15.7 x 37.8 inch
	Lower Shelf Height - From Floor	370 mm
		14.6 inch
COMPACT	Upper Shelf Height - From Floor	790 mm
		31.1 inch
	Castor Size	75 mm
		3 inch
ECONOMY COMPACT	Overall Dimensions (LxWxH)	400 x 400 x 960 mm
		15.7 x 15.7 x 37.8 inch
	Lower Shelf Height - From Floor	370 mm
		14.6 inch
	Upper Shelf Height - From Floor	790 mm
		31.1 inch
	Castor Size	75 mm
		3 inch
	Overall Dimensions (LxWxH)	400 x 400 x 930 mm
		15.7 x 15.7 x 36.6 inch
	Lower Shelf Height - From Floor	340 mm
		13.4 inch
	Upper Shelf Height - From Floor	760 mm
		29.9 inch
	Castor Size	50 mm
		2 inch



## OUTDOOR CARE PRODUCTS

BIGFOOT HALF STEP		
Overall Dimensions - Without Raiser Block (LxWxH)	444 x 754 x 90 - 110 mm	
	17.5 x 29.7 x 3.5 - 4.3 inch	
Overall Dimensions - With Raiser Block (LxWxH)	444 x 754 x 140 - 160 mm	
	17.5 x 29.7 x 5.5 - 6.3 inch	

BIGFOOT HALF STEP HANDLE		
Overall Dimensions - Handle Only (WxH)	423 x 985 mm	
	16.7 x 38.8 inch	
Handle Diameter	25 mm	
	1 inch	

DERBY HALF STEP		
Overall Dimensions (LxWxH)	435 x 750 x 110 - 127 mm	
	17.1 x 29.5 x 4.3-5 inch	

LANGHAM HALF STEP		
Overall Dimensions (LxWxH)	435 x 750 x 110 mm	
	17.1 x 29.5 x 4.3 inch	

METAL HALF STEP		
K30/ K30H	Overall Dimensions (LxWxH)	410 x 762 x 105 mm
		16.1 x 30 x 4.1 inch
	Overall Dimensions - Handle Only (WxH)	526 x 958 mm
		20.7 x 37.7 inch
	Handle Diameter	25 mm
		1 inch
K30L/ K30LH	Overall Dimensions (LxWxH)	610 x 762 x 105 mm
		24 x 30 x 4.1 inch
	Overall Dimensions - Handle Only (WxH)	727 x 958 mm
		28.6 x 37.7 inch
	Handle Diameter	25 mm
		1 inch

METAL RAMP WEDGE		
LP/RW2	Overall Dimensions (LxWxH)	154 x 764 x 25 mm
		6.1 x 30.1 x 1 inch
LP/RW5	Overall Dimensions (LxWxH)	223 x 764 x 50 mm
		8.8 x 30.1 x 2 inch
LP/RW9	Overall Dimensions (LxWxH)	308 x 764 x 75 mm
		12.1 x 30.1 x 3 inch

PRIMA OUTDOOR GRAB BAR		
Handle Width x Depth	37 x 31 mm	
	1.5 x 1.2 inch	
Distance from wall to handle	37 mm	
	1.5 inch	
Overall Dimensions (LxWxH)	492 x 65 x 68.5 mm	
	19.4 x 2.6 x 2.7 inch	
Handle Length	327 mm	
	12.9 inch	

CEREBRA SLEDGE		
Overall Dimensions (LxWxH)	1198 x 497 x 724 mm	
	47.2 x 19.6 x 28.5 inch	
Seat Dimensions (LxWxH)	277 x 361 x 591 mm	
	10.9 x 14.2 x 23.3 inch	



## BEDROOM COMMODES

WALTON COMMODE		
Overall Dimensions (LxWxH)	560 x 675 x 745 - 900 mm	
	22 x 26.6 x 29.3 - 35.4 inch	
Seat Dimensions (LxWxH)	500 x 480 x 425 - 580 mm	
	19.7 x 18.9 x 16.7 - 22.8 inch	
Width Between Arms	490 mm	
	19.3 inch	
Armrest Height	540 - 695 mm	
	21.3 - 27.4 inch	

DERBY BASKETWEAVE COMMODE		
Overall Dimensions (LxWxH)	500 x 600 x 775 mm	
	19.7 x 23.7 x 30.5 inch	
Seat Dimensions (LxWxH)	440 x 440 x 470 mm	
	17.3 x 17.3 x 18.5 inch	
Width Between Arms	530 mm	
	20.9 inch	
Armrest Height	600 mm	
	23.6 inch	

DELUXE COMMODE		
Overall Dimensions (LxWxH)	554 x 559 x 800 mm	
	21.8 x 22 x 31.5 inch	
Seat Dimensions (LxWxH)	478 x 436 x 488 mm	
	18.8 x 17.2 x 19.2 inch	
Width Between Arms	Front = 443 mm; Rear = 373 mm	
	Front = 17.4 inch; Rear = 14.7 inch	
Armrest Height	681 mm	
	26.8 inch	

ROYALE COMMODE		
STANDARD	Overall Dimensions (LxWxH)	580 x 610 x 872 mm
		22.8 x 24 x 34.3 inch
	Seat Dimensions (LxWxH)	470 x 460 x 480 mm
		18.5 x 18.1 x 18.9 inch
	Width Between Arms	432 mm
		17 inch
	Armrest Height	673 mm
		26.5 inch

ROYALE COMMODE (continued)		
EXTRA WIDE	Overall Dimensions (LxWxH)	609 x 688 x 872 mm
		24 x 27.1 x 34.3 inch
	Seat Dimensions (LxWxH)	470 x 530 x 480 mm
		18.5 x 20.9 x 18.9 inch
	Width Between Arms	510 mm
		20.1 inch
	Armrest Height	673 mm
		26.5 inch

ROYALE FLUSHING COMMODE		
Overall Dimensions (LxWxH)	578 x 610 x 867 mm	
	22.8 x 24 x 34.3 inch	
Seat Dimensions (LxWxH)	468 x 450 x 480 mm	
	18.4 x 17.7 x 18.2 inch	
Width Between Arms	432 mm	
	17 inch	
Armrest Height	673 mm	
	26.5 inch	
Flushing Potty Overall Dimensions (LxWxH)	419 x 379 x 414 mm	
	16.5 x 14.9 x 16.3 inch	
Flushing Potty Aperture Size (LxW)	270 mm x 210 mm	
	10.6 x 8.3 inch	

DEVON COMMODE		
Overall Dimensions (LxWxH)	475 x 545 x 835 mm	
	18.7 x 21.5 x 32.9 inch	
Seat Dimensions (LxWxH)	450 x 438 x 470 mm	
	17.7 x 17.2 x 18.5 inch	
Width Between Arms	440 mm	
	17.3 inch	
Armrest Height	670 mm	
	26.4 inch	



ASHBY COMMODE		
STOOL	Overall Dimensions (LxWxH)	420 x 500 x 585 - 710 mm
		16.5 x 19.7 x 23 - 28 inch
	Seat Dimensions (LxWxH)	392 x 375 x 450 - 575 mm
		15.4 x 14.8 x 17.7 - 22.6 inch
	Width Between Arms	448 mm
		17.6 inch
CHAIR	Overall Dimensions (LxWxH)	420 x 500 x 675 - 800 mm
		16.5 x 19.7 x 26.6 - 31.5 inch
	Seat Dimensions (LxWxH)	392 x 375 x 450 - 575 mm
		15.4 x 14.8 x 17.7 - 22.6 inch
	Width Between Arms	432 mm
		17 inch
	Armrest Height	675 - 800 mm
		26.6 - 31.5 inch

DERBY CORNER COMMODE		
REGULAR	Overall Dimensions (LxWxH)	620 x 665 x 825 mm
		24.4 x 26.2 x 32.5 inch
	Seat Dimensions (LxWxH)	520 x 560 x 490 mm
		20.5 x 22 x 19.3 inch
	Width Between Arms	650 mm
		25.6 inch
TALL	Overall Dimensions (LxWxH)	620 x 665 x 875 mm
		16.5 x 19.7 x 34.4 inch
	Seat Dimensions (LxWxH)	520 x 560 x 540 mm
		20.5 x 22 x 21.3 inch
	Width Between Arms	650 mm
		25.6 inch
	Armrest Height	730 mm
		28.7 inch

DIGNITY COMMODE	
Overall Dimensions (LxWxH)	592 x 609 x 647 - 697 mm
	23.3 x 24 x 25.5 - 27.4 inch
Seat Dimensions (LxWxH)	416 x 379 x 502 mm
	16.4 x 14.9 x 19.8 inch
Seat Aperture (LxW)	296 x 198 mm
	11.7 x 7.8 inch
Width Between Arms	515 mm
	20.3 inch
Armrest Height	647 - 697 mm
	25.5 - 27.4 inch
Water Reservoir Capacity	3.5L of water - Enough for 2 - 3 uses

TIMBERRY SCANDI COMMODE	
Overall Dimensions (LxWxH)	620 x 510 x 745 mm
	24.4 x 20.1 x 29.3 inch
Seat Dimensions (LxWxH)	445 x 458 x 483 mm
	17.5 x 18 x 19 inch
Width Between Arms	458 mm
	18 inch
Armrest Height	672 mm
	26.5 inch

TIMBERRY SCANDI PETITE	
Overall Dimensions (L x W x H)	610 x 510 x 710 mm
	24 x 20 x 30 inch
Seat Dimensions (L x W x H)	445 x 458 x 443 mm
	17.5 x 18 x 17.4 inch
Width Between Arms	458 mm
	18 inch
Armrest Height	632 mm
	24.9 inch

TIMBERRY KURVE COMMODE	
Overall Dimensions (LxWxH)	590 x 690 x 730 mm
	23.2 x 27.2 x 28.7 inch
Seat Dimensions (LxWxH)	430 x 490 x 470 mm
	16.9 x 19.3 x 18.5 inch
Width Between Arms	540 mm
	21.3 inch
Armrest Height	670 mm
	26.4 inch

## COMMODE PANS

ASHBY PAN AND LID	
Overall Dimensions (LxWxH)	349 x 266 x 135 mm
	13.7 x 10.5 x 5.3 inch
Capacity	3.5 litres

BURTON PAN AND LID	
Overall Dimensions (LxWxH)	345 x 280 x 173 mm
	13.6 x 11 x 6.8 inch
Capacity	7 litres

## HOME

BAMBERRY 24IN STRAIGHT TRANSFER BOARD	
Overall Dimensions (LxWxH)	604 x 210 x 15 mm
	23.8 x 8.3 x 0.6 inch

BAMBERRY 30IN STRAIGHT TRANSFER BOARD	
Overall Dimensions (LxWxH)	756 x 210 x 15 mm
	29.8 x 8.3 x 0.6 inch

BAMBERRY CURVED TRANSFER BOARD	
Overall Dimensions (LxWxH)	656 x 350 x 15 mm
	25.8 x 13.8 x 0.6 inch

BAMBERRY STEP	
Overall Dimensions (LxWxH)	354 x 454 x 100 mm
	13.9 x 17.9 x 3.9 inch

FOR MORE INFORMATION  
PLEASE CONTACT US ON:

**Tel:** 01332 810 504

**Email:** [enquiries@gordonellis.co.uk](mailto:enquiries@gordonellis.co.uk)

NOTES

Lined area for notes, consisting of multiple horizontal lines.



## GORDON ELLIS & CO

Trent Lane Castle Donington  
Derby DE74 2AT England

T: +44 (0)1332 810 504

F: +44 (0)1332 850 830

E: [enquiries@gordonellis.co.uk](mailto:enquiries@gordonellis.co.uk)

[www.gordonellishealthcare.co.uk](http://www.gordonellishealthcare.co.uk)



Search for Gordon Ellis Healthcare



Gordon Ellis Healthcare



## FURNITURE RAISER TRAINING

We can provide certified furniture raiser training for you and your colleagues.

Please call our customer service team for more information, or to book your training session.

## VIDEOS

Watch demonstration videos for all of our key ranges on YouTube

[www.youtube.com/gordonellisandco](http://www.youtube.com/gordonellisandco)

